

Product datasheet for **TA311166**

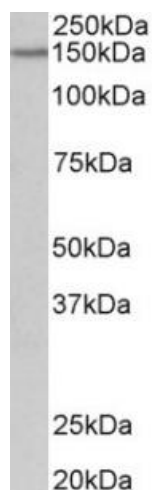
Pcdh17 Goat Polyclonal Antibody

Product data:

Product Type:	Primary Antibodies
Applications:	WB
Recommended Dilution:	WB: 0.1-0.3ug/ml
Reactivity:	Mouse (Expected from sequence similarity: Human, Rat, Pig, Cow)
Host:	Goat
Clonality:	Polyclonal
Immunogen:	Peptide with sequence C-RVFADVHSRASRDS, from the internal region (near C Terminus) of the protein sequence according to NP_001035519.1.
Formulation:	Supplied at 0.5 mg/ml in Tris saline, 0.02% sodium azide, pH7.3 with 0.5% bovine serum albumin. Aliquot and store at -20C. Minimize freezing and thawing.
Concentration:	lot specific
Purification:	Purified from goat serum by ammonium sulphate precipitation followed by antigen affinity chromatography using the immunizing peptide.
Conjugation:	Unconjugated
Storage:	Store at -20°C as received.
Stability:	Stable for 12 months from date of receipt.
Gene Name:	protocadherin 17
Database Link:	NP_001013775 Entrez Gene 27253 Human Entrez Gene 306055 Rat Entrez Gene 219228 Mouse
Synonyms:	PCDH68; PCH68; Protocadherin-68



[View online »](#)

Product images:

(0.2ug/ml) staining of Mouse fetal Brain lysate (35ug protein in RIPA buffer). Primary incubation was 1 hour. Detected by chemiluminescence.