

## Product datasheet for **TA311162**

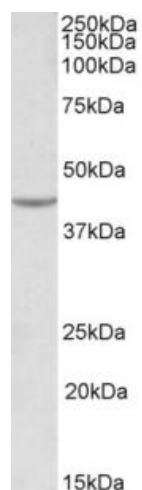
### VEGFA Goat Polyclonal Antibody

#### Product data:

Product Type:	Primary Antibodies
Applications:	WB
Recommended Dilution:	WB: 0.1-0.3ug/ml
Reactivity:	Human (Expected from sequence similarity: Dog, Pig)
Host:	Goat
Clonality:	Polyclonal
Immunogen:	Peptide with sequence C-RIKPHQGQHIGE, from the internal region of the protein sequence according to NP_001020537.2; NP_003367.4; NP_001020538.2; NP_001020539.2; etc..
Formulation:	Supplied at 0.5 mg/ml in Tris saline, 0.02% sodium azide, pH7.3 with 0.5% bovine serum albumin. Aliquot and store at -20C. Minimize freezing and thawing.
Concentration:	lot specific
Purification:	Purified from goat serum by ammonium sulphate precipitation followed by antigen affinity chromatography using the immunizing peptide.
Conjugation:	Unconjugated
Storage:	Store at -20°C as received.
Stability:	Stable for 12 months from date of receipt.
Gene Name:	vascular endothelial growth factor A
Database Link:	<a href="#">NP_001020537</a> <a href="#">Entrez Gene 403802 Dog</a> <a href="#">Entrez Gene 7422 Human</a> <a href="#">P15692</a>
Synonyms:	MVCD1; VEGF; VPF
Protein Families:	Druggable Genome, Secreted Protein
Protein Pathways:	Bladder cancer, Cytokine-cytokine receptor interaction, Focal adhesion, mTOR signaling pathway, Pancreatic cancer, Pathways in cancer, Renal cell carcinoma, VEGF signaling pathway



[View online »](#)

**Product images:**

(0.1 ug/ml) staining of HEK293 lysate (35ug protein in RIPA buffer). Primary incubation was 1 hour. Detected by chemiluminescence.