

Product datasheet for **TA311155**

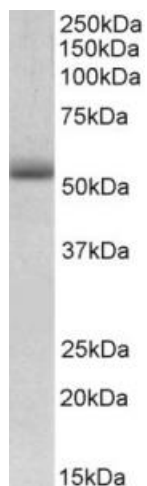
Trim72 Goat Polyclonal Antibody

Product data:

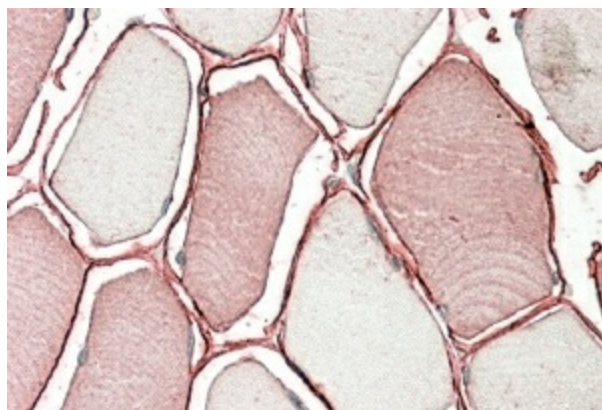
| | |
|-----------------------|---|
| Product Type: | Primary Antibodies |
| Applications: | IHC, WB |
| Recommended Dilution: | WB: 0.01-0.03ug/ml; IHC: 3-5ug/ml; ELISA: 1:16,000 |
| Reactivity: | Human, Mouse, Rat (Expected from sequence similarity: Dog, Cow) |
| Host: | Goat |
| Clonality: | Polyclonal |
| Immunogen: | Peptide with sequence C-RPQALSTNLQ, from the internal region of the protein sequence according to NP_001008275.1. |
| Formulation: | Supplied at 0.5 mg/ml in Tris saline, 0.02% sodium azide, pH7.3 with 0.5% bovine serum albumin. Aliquot and store at -20C. Minimize freezing and thawing. |
| Concentration: | lot specific |
| Purification: | Purified from goat serum by ammonium sulphate precipitation followed by antigen affinity chromatography using the immunizing peptide. |
| Conjugation: | Unconjugated |
| Storage: | Store at -20°C as received. |
| Stability: | Stable for 12 months from date of receipt. |
| Gene Name: | tripartite motif-containing 72 |
| Database Link: | NP_001073401 Entrez Gene 365377 Rat Entrez Gene 493829 Human Entrez Gene 489927 Dog Entrez Gene 434246 Mouse Q1XH17 |
| Synonyms: | MG53; mitsugumin-53 |



[View online »](#)

Product images:

(0.01ug/ml) staining of Mouse Heart lysate (35ug protein in RIPA buffer). Primary incubation was 1 hour. Detected by chemiluminescence.



TA311155 (3.8ug/ml) staining of paraffin embedded Human Skeletal Muscle. Steamed antigen retrieval with citrate buffer pH 6, AP-staining.