

Product datasheet for **TA311153**

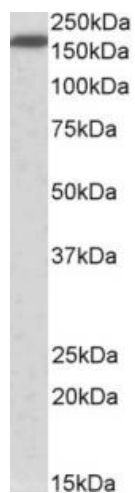
Neurofascin (NFASC) Goat Polyclonal Antibody

Product data:

Product Type:	Primary Antibodies
Applications:	WB
Recommended Dilution:	WB: 0.5-2ug/ml
Reactivity:	Human, Rat (Expected from sequence similarity: Mouse, Dog, Cow)
Host:	Goat
Clonality:	Polyclonal
Immunogen:	Peptide with sequence C-NFSPNQTKFTVQRT, from the internal region of the protein sequence according to NP_001005388.2; NP_001153803.1; NP_001153804.1; NP_055905.2;
Formulation:	Supplied at 0.5 mg/ml in Tris saline, 0.02% sodium azide, pH7.3 with 0.5% bovine serum albumin. Aliquot and store at -20C. Minimize freezing and thawing.
Concentration:	lot specific
Purification:	Purified from goat serum by ammonium sulphate precipitation followed by antigen affinity chromatography using the immunizing peptide.
Conjugation:	Unconjugated
Storage:	Store at -20°C as received.
Stability:	Stable for 12 months from date of receipt.
Gene Name:	neurofascin
Database Link:	NP_001005388 Entrez Gene 116690 Rat Entrez Gene 269116 Mouse Entrez Gene 488565 Dog Entrez Gene 23114 Human O94856
Synonyms:	NF; NRCAML
Protein Families:	Transmembrane
Protein Pathways:	Cell adhesion molecules (CAMs)



[View online »](#)

Product images:

(0.5ug/ml) staining of Human Lung lysate (35ug protein in RIPA buffer). Primary incubation was 1 hour. Detected by chemiluminescence.