

Product datasheet for **TA311151**

KCTD11 Goat Polyclonal Antibody

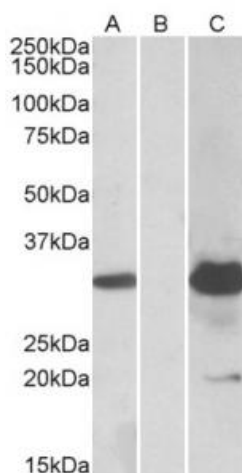
Product data:

Product Type:	Primary Antibodies
Applications:	WB
Recommended Dilution:	WB: 1-2ug/ml
Reactivity:	Human (Expected from sequence similarity: Mouse, Rat, Dog, Cow)
Host:	Goat
Clonality:	Polyclonal
Immunogen:	Peptide with sequence C-PEVEYGRLGLQP, from the internal region of the protein sequence according to NP_001002914.1.
Formulation:	Supplied at 0.5 mg/ml in Tris saline, 0.02% sodium azide, pH7.3 with 0.5% bovine serum albumin. Aliquot and store at -20C. Minimize freezing and thawing.
Concentration:	lot specific
Purification:	Purified from goat serum by ammonium sulphate precipitation followed by antigen affinity chromatography using the immunizing peptide.
Conjugation:	Unconjugated
Storage:	Store at -20°C as received.
Stability:	Stable for 12 months from date of receipt.
Gene Name:	potassium channel tetramerization domain containing 11
Database Link:	NP_001002914 Entrez Gene 216858 Mouse Entrez Gene 363634 Rat Entrez Gene 607761 Dog Entrez Gene 147040 Human Q693B1
Synonyms:	C17orf36; KCASH1; KCTD11; REN
Protein Families:	Ion Channels: Other



[View online »](#)

Product images:



HEK293 lysate (10ug protein in RIPA buffer) overexpressing Human KCTD11 with DDK (FLAG) tag probed with TA311151 (1.0ug/ml) in Lane A and probed with anti-DDK Tag (1:5000, Cat# [TA50011-100]) in Lane C. Mock-transfected HEK293 probed with TA311151 (1mg/ml) in Lane B. Primary incubations were for 1 hour. Detected by chemiluminescence.