

Product datasheet for **TA311149**

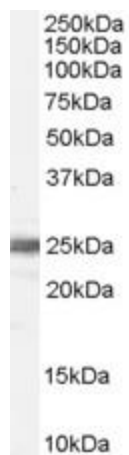
RPL19 Goat Polyclonal Antibody

Product data:

Product Type:	Primary Antibodies
Applications:	WB
Recommended Dilution:	WB: 0.1-0.3ug/ml
Reactivity:	Human, Mouse, Rat, Dog
Host:	Goat
Clonality:	Polyclonal
Immunogen:	Peptide with sequence C-LRRYRESKKIDRH, from the internal region of the protein sequence according to NP_000972.1.
Formulation:	Supplied at 0.5 mg/ml in Tris saline, 0.02% sodium azide, pH7.3 with 0.5% bovine serum albumin. Aliquot and store at -20C. Minimize freezing and thawing.
Concentration:	lot specific
Purification:	Purified from goat serum by ammonium sulphate precipitation followed by antigen affinity chromatography using the immunizing peptide.
Conjugation:	Unconjugated
Storage:	Store at -20°C as received.
Stability:	Stable for 12 months from date of receipt.
Gene Name:	ribosomal protein L19
Database Link:	NP_000972 Entrez Gene 19921 Mouse Entrez Gene 81767 Rat Entrez Gene 403682 Dog Entrez Gene 6143 Human P84098
Synonyms:	L19
Protein Pathways:	Ribosome



[View online »](#)

Product images:

(0.1ug/ml) staining of Human Testis lysate (35ug protein in RIPA buffer). Primary incubation was 1 hour. Detected by chemiluminescence.