

## Product datasheet for **TA311144**

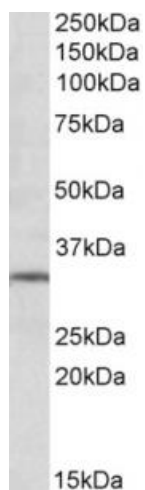
### Metabotropic Glutamate Receptor 2 (GRM2) Goat Polyclonal Antibody

#### Product data:

Product Type:	Primary Antibodies
Applications:	WB
Recommended Dilution:	WB: 1-3ug/ml, IHC: 3-5ug/ml
Reactivity:	Human (Expected from sequence similarity: Mouse, Rat, Dog, Cow, Rabbit)
Host:	Goat
Clonality:	Polyclonal
Immunogen:	Peptide with sequence C-KETAPERREV, from the internal region of the protein sequence according to NP_000830.2; NP_001123535.1.
Formulation:	Supplied at 0.5 mg/ml in Tris saline, 0.02% sodium azide, pH7.3 with 0.5% bovine serum albumin. Aliquot and store at -20C. Minimize freezing and thawing.
Concentration:	lot specific
Purification:	Purified from goat serum by ammonium sulphate precipitation followed by antigen affinity chromatography using the immunizing peptide.
Conjugation:	Unconjugated
Storage:	Store at -20°C as received.
Stability:	Stable for 12 months from date of receipt.
Gene Name:	glutamate metabotropic receptor 2
Database Link:	<a href="#">NP_000830</a> <a href="#">Entrez Gene 24415 Rat</a> <a href="#">Entrez Gene 108068 Mouse</a> <a href="#">Entrez Gene 484751 Dog</a> <a href="#">Entrez Gene 2912 Human</a> <a href="#">Q14416</a>
Synonyms:	GLUR2; GPRC1B; mGlu2; MGLUR2
Protein Families:	Druggable Genome, GPCR, Transmembrane
Protein Pathways:	Neuroactive ligand-receptor interaction



[View online »](#)

**Product images:**

(1ug/ml) staining of Human Hippocampus lysate (35ug protein in RIPA buffer). Primary incubation was 1 hour. Detected by chemiluminescence.