

Product datasheet for **TA311143**

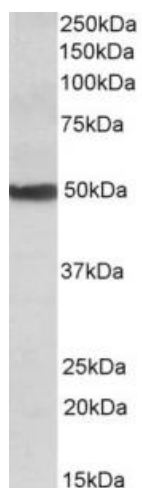
CYP24A1 Goat Polyclonal Antibody

Product data:

| | |
|-----------------------|---|
| Product Type: | Primary Antibodies |
| Applications: | WB |
| Recommended Dilution: | WB: 0.1-0.3ug/ml |
| Reactivity: | Human, Rat |
| Host: | Goat |
| Clonality: | Polyclonal |
| Immunogen: | Peptide with sequence C-RKYDIQATDN, from the internal region of the protein sequence according to NP_000773.2; NP_001122387.1. |
| Formulation: | Supplied at 0.5 mg/ml in Tris saline, 0.02% sodium azide, pH7.3 with 0.5% bovine serum albumin. Aliquot and store at -20C. Minimize freezing and thawing. |
| Concentration: | lot specific |
| Purification: | Purified from goat serum by ammonium sulphate precipitation followed by antigen affinity chromatography using the immunizing peptide. |
| Conjugation: | Unconjugated |
| Storage: | Store at -20°C as received. |
| Stability: | Stable for 12 months from date of receipt. |
| Gene Name: | cytochrome P450 family 24 subfamily A member 1 |
| Database Link: | NP_000773 Entrez Gene 25279 Rat Entrez Gene 1591 Human Q07973 |
| Synonyms: | CP24; CYP24; HCAI; P450-CC24 |
| Protein Families: | Druggable Genome |



[View online »](#)

Product images:

(0.1ug/ml) staining of Human Liver lysate (35ug protein in RIPA buffer). Primary incubation was 1 hour. Detected by chemiluminescence.