

## Product datasheet for **TA311142**

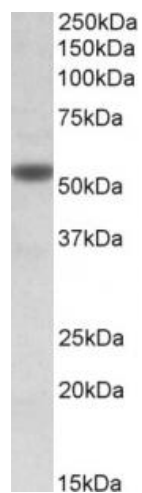
### CHRNA5 Goat Polyclonal Antibody

#### Product data:

Product Type:	Primary Antibodies
Applications:	WB
Recommended Dilution:	WB: 1-3ug/ml
Reactivity:	Human
Host:	Goat
Clonality:	Polyclonal
Immunogen:	Peptide with sequence C-HVDRYFTQKEET, from the internal region of the protein sequence according to NP_000736.2.
Formulation:	Supplied at 0.5 mg/ml in Tris saline, 0.02% sodium azide, pH7.3 with 0.5% bovine serum albumin. Aliquot and store at -20C. Minimize freezing and thawing.
Concentration:	lot specific
Purification:	Purified from goat serum by ammonium sulphate precipitation followed by antigen affinity chromatography using the immunizing peptide.
Conjugation:	Unconjugated
Storage:	Store at -20°C as received.
Stability:	Stable for 12 months from date of receipt.
Gene Name:	cholinergic receptor nicotinic alpha 5 subunit
Database Link:	<a href="#">NP_000736</a> <a href="#">Entrez Gene 1138 Human</a> <a href="#">P30532</a>
Synonyms:	LNCR2
Protein Families:	Druggable Genome, Ion Channels: Cys-loop Receptors, Transmembrane



[View online »](#)

**Product images:**

(1ug/ml) staining of KELLY lysate (35ug protein in RIPA buffer). Primary incubation was 1 hour. Detected by chemiluminescence.