

Product datasheet for **TA311141**

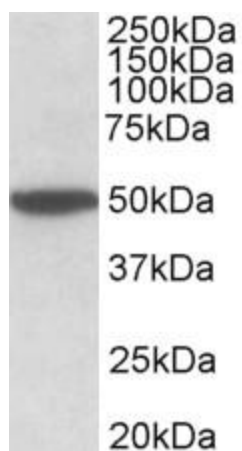
Chrm2 Goat Polyclonal Antibody

Product data:

Product Type:	Primary Antibodies
Applications:	WB
Recommended Dilution:	WB: 0.5-2ug/ml
Reactivity:	Mouse (Expected from sequence similarity: Human, Dog, Pig, Cow)
Host:	Goat
Clonality:	Polyclonal
Immunogen:	Peptide with sequence C-QNGDEKQNIVARK, from the internal region of the protein sequence according to NP_000730.1.
Formulation:	Supplied at 0.5 mg/ml in Tris saline, 0.02% sodium azide, pH7.3 with 0.5% bovine serum albumin. Aliquot and store at -20C. Minimize freezing and thawing.
Concentration:	lot specific
Purification:	Purified from goat serum by ammonium sulphate precipitation followed by antigen affinity chromatography using the immunizing peptide.
Conjugation:	Unconjugated
Storage:	Store at -20°C as received.
Stability:	Stable for 12 months from date of receipt.
Gene Name:	cholinergic receptor, muscarinic 2, cardiac
Database Link:	NP_987076 Entrez Gene 1129 Human Entrez Gene 403858 Dog Entrez Gene 243764 Mouse Q9ERZ4
Synonyms:	FLJ43243; HM2; MGC120006; MGC120007; OTTHUMP00000208394; OTTHUMP00000208395



[View online »](#)

Product images:

(2ug/ml) staining of Mouse Brain lysate (35ug protein in RIPA buffer). Primary incubation was 1 hour. Detected by chemiluminescence.