

Product datasheet for **TA311140**

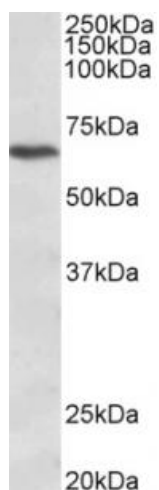
CACNB2 Goat Polyclonal Antibody

Product data:

Product Type:	Primary Antibodies
Applications:	WB
Recommended Dilution:	WB: 1-3ug/ml
Reactivity:	Human, Mouse (Expected from sequence similarity: Rat, Dog, Cow)
Host:	Goat
Clonality:	Polyclonal
Immunogen:	Peptide with sequence ECNKQRSRHKSKDRY, from the C Terminus of the protein sequence according to NP_000715.2; NP_963890.2; NP_963884.2; NP_963891.1; NP_963887.2; NP_963865.2; NP_963864.1; NP_963866.2; NP_001161417.1.
Formulation:	Supplied at 0.5 mg/ml in Tris saline, 0.02% sodium azide, pH7.3 with 0.5% bovine serum albumin. Aliquot and store at -20C. Minimize freezing and thawing.
Concentration:	lot specific
Purification:	Purified from goat serum by ammonium sulphate precipitation followed by antigen affinity chromatography using the immunizing peptide.
Conjugation:	Unconjugated
Storage:	Store at -20°C as received.
Stability:	Stable for 12 months from date of receipt.
Gene Name:	calcium voltage-gated channel auxiliary subunit beta 2
Database Link:	NP_000715 Entrez Gene 12296 Mouse Entrez Gene 116600 Rat Entrez Gene 487113 Dog Entrez Gene 783 Human Q08289
Synonyms:	CACNLB2; CAVB2; MYSB
Protein Families:	Druggable Genome, Ion Channels: Other
Protein Pathways:	Arrhythmogenic right ventricular cardiomyopathy (ARVC), Cardiac muscle contraction, Dilated cardiomyopathy, Hypertrophic cardiomyopathy (HCM), MAPK signaling pathway



[View online »](#)

Product images:

(1ug/ml) staining of Jurkat lysate (35ug protein in RIPA buffer). Primary incubation was 1 hour. Detected by chemiluminescence.