

Product datasheet for **TA311138**

ALDH9A1 Goat Polyclonal Antibody

Product data:

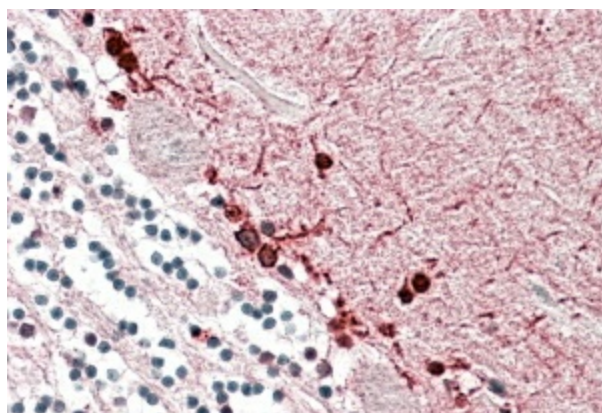
Product Type:	Primary Antibodies
Applications:	IHC, WB
Recommended Dilution:	WB: 0.3-1ug/ml; IHC: 3-5ug/ml; ELISA: 1:16,000
Reactivity:	Human (Expected from sequence similarity: Cow)
Host:	Goat
Clonality:	Polyclonal
Immunogen:	Peptide with sequence C-QKEILDKFTEEVVKQ, from the internal region of the protein sequence according to NP_000687.3.
Formulation:	Supplied at 0.5 mg/ml in Tris saline, 0.02% sodium azide, pH7.3 with 0.5% bovine serum albumin. Aliquot and store at -20C. Minimize freezing and thawing.
Concentration:	lot specific
Purification:	Purified from goat serum by ammonium sulphate precipitation followed by antigen affinity chromatography using the immunizing peptide.
Conjugation:	Unconjugated
Storage:	Store at -20°C as received.
Stability:	Stable for 12 months from date of receipt.
Gene Name:	aldehyde dehydrogenase 9 family member A1
Database Link:	NP_000687 Entrez Gene 223 Human P49189
Synonyms:	ALDH4; ALDH7; ALDH9; E3; TMABADH
Protein Families:	Druggable Genome
Protein Pathways:	Arginine and proline metabolism, Ascorbate and aldarate metabolism, beta-Alanine metabolism, Butanoate metabolism, Fatty acid metabolism, Glycerolipid metabolism, Glycolysis / Gluconeogenesis, Histidine metabolism, Limonene and pinene degradation, Lysine degradation, Metabolic pathways, Propanoate metabolism, Pyruvate metabolism, Tryptophan metabolism, Valine, leucine and isoleucine degradation



[View online »](#)

Product images:

(0.3ug/ml) staining of Human Kidney lysate (35ug protein in RIPA buffer). Primary incubation was 1 hour. Detected by chemiluminescence.



TA311138 (3.8ug/ml) staining of paraffin embedded Human Cerebellum. Steamed antigen retrieval with citrate buffer pH 6, AP-staining.