

Product datasheet for **TA311137**

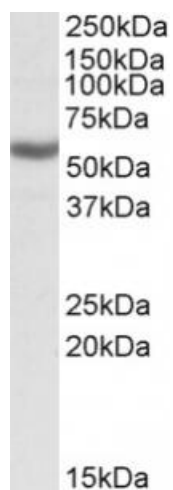
ALDH3B1 Goat Polyclonal Antibody

Product data:

| | |
|-----------------------|--|
| Product Type: | Primary Antibodies |
| Applications: | WB |
| Recommended Dilution: | WB: 0.3-1ug/ml |
| Reactivity: | Human (Expected from sequence similarity: Mouse, Rat, Dog, Cow) |
| Host: | Goat |
| Clonality: | Polyclonal |
| Immunogen: | Peptide with sequence C-QDLHKSAFESEVSE, from the internal region of the protein sequence according to NP_000685.1. |
| Formulation: | Supplied at 0.5 mg/ml in Tris saline, 0.02% sodium azide, pH7.3 with 0.5% bovine serum albumin. Aliquot and store at -20C. Minimize freezing and thawing. |
| Concentration: | lot specific |
| Purification: | Purified from goat serum by ammonium sulphate precipitation followed by antigen affinity chromatography using the immunizing peptide. |
| Conjugation: | Unconjugated |
| Storage: | Store at -20°C as received. |
| Stability: | Stable for 12 months from date of receipt. |
| Gene Name: | aldehyde dehydrogenase 3 family member B1 |
| Database Link: | NP_000685 Entrez Gene 67689 Mouse Entrez Gene 309147 Rat Entrez Gene 476003 Dog Entrez Gene 221 Human P43353 |
| Synonyms: | ALDH4; ALDH7 |
| Protein Families: | Druggable Genome |
| Protein Pathways: | Drug metabolism - cytochrome P450, Glycolysis / Gluconeogenesis, Histidine metabolism, Metabolic pathways, Metabolism of xenobiotics by cytochrome P450, Phenylalanine metabolism, Tyrosine metabolism |



[View online »](#)

Product images:

(0.3ug/ml) staining of K562 lysate (35ug protein in RIPA buffer). Primary incubation was 1 hour. Detected by chemiluminescence.