

Product datasheet for **TA311135**

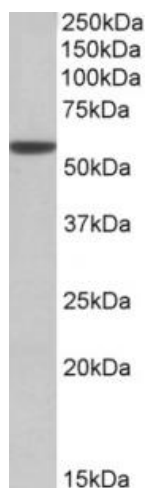
Aldh3a1 Goat Polyclonal Antibody

Product data:

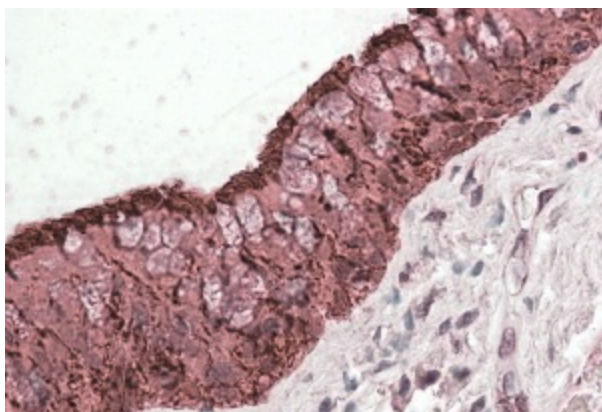
Product Type:	Primary Antibodies
Applications:	IHC, WB
Recommended Dilution:	WB: 0.1-0.3ug/ml; IHC: 3-5ug/ml; ELISA: 1:32,000
Reactivity:	Human, Mouse
Host:	Goat
Clonality:	Polyclonal
Immunogen:	Peptide with sequence C-RYPPSPAKMTQH, from the C Terminus of the protein sequence according to NP_000682.3.
Formulation:	Supplied at 0.5 mg/ml in Tris saline, 0.02% sodium azide, pH7.3 with 0.5% bovine serum albumin. Aliquot and store at -20C. Minimize freezing and thawing.
Concentration:	lot specific
Purification:	Purified from goat serum by ammonium sulphate precipitation followed by antigen affinity chromatography using the immunizing peptide.
Conjugation:	Unconjugated
Storage:	Store at -20°C as received.
Stability:	Stable for 12 months from date of receipt.
Gene Name:	aldehyde dehydrogenase family 3, subfamily A1
Database Link:	NP_031462 Entrez Gene 218 Human Entrez Gene 11670 Mouse P47739
Synonyms:	ALDH3; ALDHIII; MGC10406



[View online »](#)

Product images:

(0.01ug/ml) staining of Mouse Eye lysate (35ug protein in RIPA buffer). Primary incubation was 1 hour. Detected by chemiluminescence.



TA311135 (3.8ug/ml) staining of paraffin embedded Human Lung. Steamed antigen retrieval with citrate buffer pH 6, AP-staining.