

Product datasheet for **TA311134**

ALDH2 Goat Polyclonal Antibody

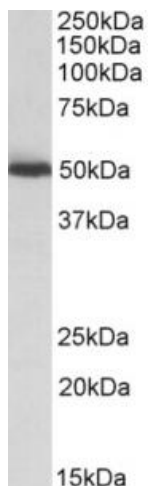
Product data:

Product Type:	Primary Antibodies
Applications:	ELISA, WB
Recommended Dilution:	WB: 0.03-0.1ug/ml, ELISA: 1-2ug/ml
Reactivity:	Human, Mouse, Rat (Expected from sequence similarity: Dog, Cow, Pig)
Host:	Goat
Clonality:	Polyclonal
Immunogen:	Peptide with sequence C-DETQFKKILGYIN, from the internal region of the protein sequence according to NP_000681.2.
Formulation:	Supplied at 0.5 mg/ml in Tris saline, 0.02% sodium azide, pH7.3 with 0.5% bovine serum albumin. Aliquot and store at -20C. Minimize freezing and thawing.
Concentration:	lot specific
Purification:	Purified from goat serum by ammonium sulphate precipitation followed by antigen affinity chromatography using the immunizing peptide.
Conjugation:	Unconjugated
Storage:	Store at -20°C as received.
Stability:	Stable for 12 months from date of receipt.
Gene Name:	aldehyde dehydrogenase 2 family (mitochondrial)
Database Link:	NP_000681 Entrez Gene 11669 Mouse Entrez Gene 29539 Rat Entrez Gene 610941 Dog Entrez Gene 217 Human P05091
Synonyms:	ALDH-E2; ALDHI; ALDM
Protein Families:	Druggable Genome
Protein Pathways:	Arginine and proline metabolism, Ascorbate and aldarate metabolism, beta-Alanine metabolism, Butanoate metabolism, Fatty acid metabolism, Glycerolipid metabolism, Glycolysis / Gluconeogenesis, Histidine metabolism, Limonene and pinene degradation, Lysine degradation, Metabolic pathways, Propanoate metabolism, Pyruvate metabolism, Tryptophan metabolism, Valine, leucine and isoleucine degradation

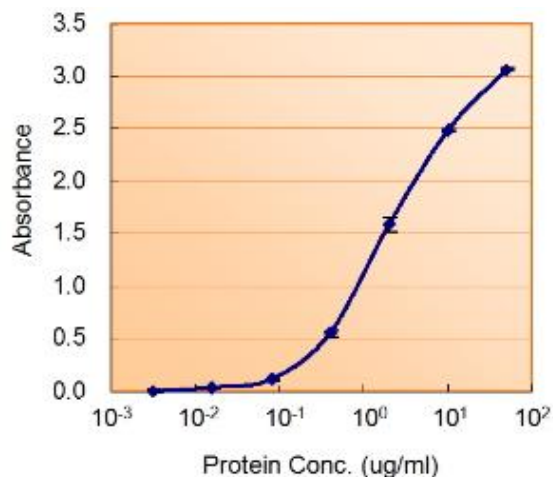


[View online »](#)

Product images:



(0.03ug/ml) staining of Mouse Liver lysate (35ug protein in RIPA buffer). Primary incubation was 1 hour. Detected by chemiluminescence.



(1.5ug/ml) as the reporter with the capture rabbit antibody at 2.5ug/ml.