

Product datasheet for **TA311131**

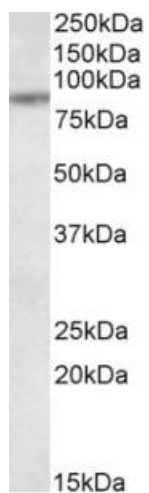
TAP1 Goat Polyclonal Antibody

Product data:

Product Type:	Primary Antibodies
Applications:	WB
Recommended Dilution:	WB: 1-3ug/ml
Reactivity:	Human
Host:	Goat
Clonality:	Polyclonal
Immunogen:	Peptide with sequence C-QKFREKLQEIKT, from the internal region of the protein sequence according to NP_000584.2.
Formulation:	Supplied at 0.5 mg/ml in Tris saline, 0.02% sodium azide, pH7.3 with 0.5% bovine serum albumin. Aliquot and store at -20C. Minimize freezing and thawing.
Concentration:	lot specific
Purification:	Purified from goat serum by ammonium sulphate precipitation followed by antigen affinity chromatography using the immunizing peptide.
Conjugation:	Unconjugated
Storage:	Store at -20°C as received.
Stability:	Stable for 12 months from date of receipt.
Gene Name:	transporter 1, ATP-binding cassette, sub-family B (MDR/TAP)
Database Link:	NP_000584 Entrez Gene 6890 Human Q03518
Synonyms:	ABC17; ABCB2; APT1; D6S114E; PSF-1; PSF1; RING4; TAP1 0102N; TAP1N
Protein Families:	Druggable Genome, Transmembrane
Protein Pathways:	ABC transporters, Antigen processing and presentation, Primary immunodeficiency



[View online »](#)

Product images:

(1ug/ml) staining of MCF7 lysate (35ug protein in RIPA buffer). Primary incubation was 1 hour. Detected by chemiluminescence.