

Product datasheet for **TA311130**

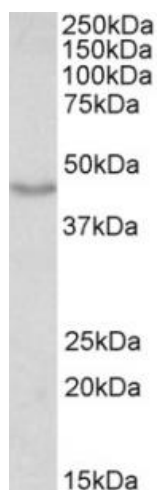
Dcx Goat Polyclonal Antibody

Product data:

Product Type:	Primary Antibodies
Applications:	IF, IHC, PEP-ELISA
Recommended Dilution:	WB: 0.01-0.03ug/ml
Reactivity:	Mouse (Expected from sequence similarity: Human, Rat, Dog, Pig, Cow)
Host:	Goat
Clonality:	Polyclonal
Immunogen:	Peptide with sequence C-KTSANMKAPQS, from the internal region of the protein sequence according to NP_000546.2; NP_835365.1; NP_835364.1; NP_001182482.1.
Formulation:	Supplied at 0.5 mg/ml in Tris saline, 0.02% sodium azide, pH7.3 with 0.5% bovine serum albumin. Aliquot and store at -20C. Minimize freezing and thawing.
Concentration:	lot specific
Purification:	Purified from goat serum by ammonium sulphate precipitation followed by antigen affinity chromatography using the immunizing peptide.
Conjugation:	Unconjugated
Storage:	Store at -20°C as received.
Stability:	Stable for 12 months from date of receipt.
Gene Name:	doublecortin
Database Link:	NP_034155 Entrez Gene 1641 Human Entrez Gene 84394 Rat Entrez Gene 612950 Dog Entrez Gene 13193 Mouse O88809
Synonyms:	DBCN; DC; doublecortex; doublecortin; doublin; Lis-X; lissencephalin-X; LISX; SCLH; XLIS



[View online »](#)

Product images:

(0.01ug/ml) staining of Mouse fetal Brain lysate (35ug protein in RIPA buffer). Primary incubation was 1 hour. Detected by chemiluminescence.