

Product datasheet for **TA311128**

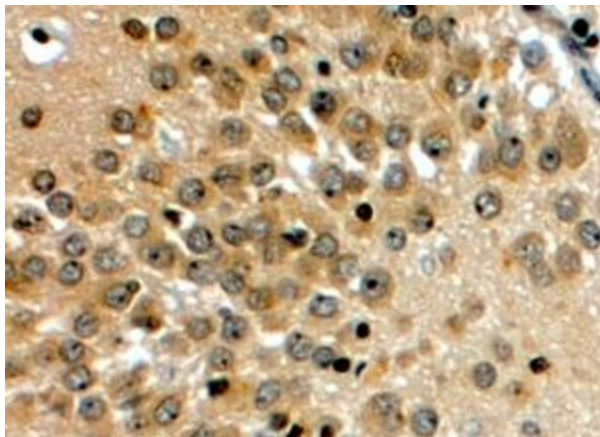
NOTCH3 Goat Polyclonal Antibody

Product data:

Product Type:	Primary Antibodies
Applications:	IHC
Recommended Dilution:	WB: 1ug/ml, IHC: 4-6ug/ml
Reactivity:	Expected from sequence similarity: Human, Mouse, Rat
Host:	Goat
Clonality:	Polyclonal
Immunogen:	Peptide with sequence C-QLGPQPEVTPKRQ, from the C Terminus of the protein sequence according to NP_000426.2.
Formulation:	Supplied at 0.5 mg/ml in Tris saline, 0.02% sodium azide, pH7.3 with 0.5% bovine serum albumin. Aliquot and store at -20C. Minimize freezing and thawing.
Concentration:	lot specific
Purification:	Purified from goat serum by ammonium sulphate precipitation followed by antigen affinity chromatography using the immunizing peptide.
Conjugation:	Unconjugated
Storage:	Store at -20°C as received.
Stability:	Stable for 12 months from date of receipt.
Gene Name:	notch 3
Database Link:	NP_000426 Entrez Gene 18131 Mouse Entrez Gene 56761 Rat Entrez Gene 4854 Human Q9UM47
Synonyms:	CADASIL; CADASIL1; CASIL; IMF2; LMNS
Protein Families:	Druggable Genome
Protein Pathways:	Dorso-ventral axis formation, Notch signaling pathway



[View online »](#)

Product images:

(4ug/ml) staining of paraffin embedded Human Hippocampus. Steamed antigen retrieval with citrate buffer pH 6, HRP-staining.