

## Product datasheet for **TA311125**

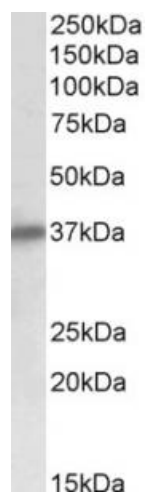
### delta Sarcoglycan (SGCD) Goat Polyclonal Antibody

#### Product data:

Product Type:	Primary Antibodies
Applications:	WB
Recommended Dilution:	WB: 0.1-0.3ug/ml, IHC: 3-5ug/ml
Reactivity:	Human, Rat (Expected from sequence similarity: Mouse, Dog, Pig, Cow)
Host:	Goat
Clonality:	Polyclonal
Immunogen:	Peptide with sequence C-RLPHGSYTPTGTR, from the internal region of the protein sequence according to NP_000328.2; NP_758447.1; NP_001121681.1.
Formulation:	Supplied at 0.5 mg/ml in Tris saline, 0.02% sodium azide, pH7.3 with 0.5% bovine serum albumin. Aliquot and store at -20C. Minimize freezing and thawing.
Concentration:	lot specific
Purification:	Purified from goat serum by ammonium sulphate precipitation followed by antigen affinity chromatography using the immunizing peptide.
Conjugation:	Unconjugated
Storage:	Store at -20°C as received.
Stability:	Stable for 12 months from date of receipt.
Gene Name:	sarcoglycan delta
Database Link:	<a href="#">NP_000328</a> <a href="#">Entrez Gene 24052 Mouse</a> <a href="#">Entrez Gene 497892 Rat</a> <a href="#">Entrez Gene 612079 Dog</a> <a href="#">Entrez Gene 6444 Human</a> <a href="#">Q92629</a>
Synonyms:	35DAG; CMD1L; DAGD; SG-delta; SGCDP; SGD
Protein Families:	Transmembrane
Protein Pathways:	Arrhythmogenic right ventricular cardiomyopathy (ARVC), Dilated cardiomyopathy, Hypertrophic cardiomyopathy (HCM), Viral myocarditis



[View online »](#)

**Product images:**

(0.1ug/ml) staining of Human Heart lysate (35ug protein in RIPA buffer). Primary incubation was 1 hour. Detected by chemiluminescence.