

Product datasheet for **TA311117**

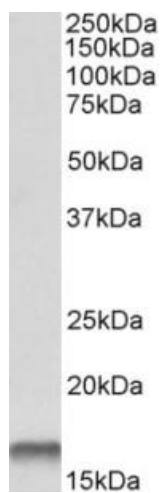
Stefin B (CSTB) Goat Polyclonal Antibody

Product data:

| | |
|-----------------------|---|
| Product Type: | Primary Antibodies |
| Applications: | IHC, PEP-ELISA, WB |
| Recommended Dilution: | WB: 0.1-0.3ug/ml |
| Reactivity: | Human (Expected from sequence similarity: Dog) |
| Host: | Goat |
| Clonality: | Polyclonal |
| Immunogen: | Peptide with sequence C-QTNKAKHDELTYF, from the C Terminus of the protein sequence according to NP_000091.1. |
| Formulation: | Supplied at 0.5 mg/ml in Tris saline, 0.02% sodium azide, pH7.3 with 0.5% bovine serum albumin. Aliquot and store at -20C. Minimize freezing and thawing. |
| Concentration: | lot specific |
| Purification: | Purified from goat serum by ammonium sulphate precipitation followed by antigen affinity chromatography using the immunizing peptide. |
| Conjugation: | Unconjugated |
| Storage: | Store at -20°C as received. |
| Stability: | Stable for 12 months from date of receipt. |
| Gene Name: | cystatin B |
| Database Link: | NP_000091 Entrez Gene 478424 Dog Entrez Gene 1476 Human P04080 |
| Synonyms: | CPI-B; CST6; EPM1; EPM1A; PME; STFB; ULD |



[View online »](#)

Product images:

(0.1ug/ml) staining of Human Lungs (35ug protein in RIPA buffer). Primary incubation was 1 hour. Detected by chemiluminescence.