

Product datasheet for TA311116

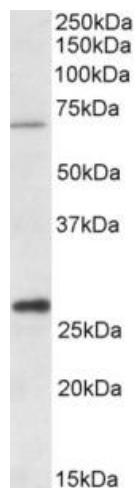
CPT2 Goat Polyclonal Antibody

Product data:

Product Type:	Primary Antibodies
Applications:	WB
Recommended Dilution:	WB: 1-3ug/ml
Reactivity:	Human, Mouse (Expected from sequence similarity: Rat, Dog, Cow, Pig)
Host:	Goat
Clonality:	Polyclonal
Immunogen:	Peptide with sequence C-PKSEYNDQLTRATN, from the internal region of the protein sequence according to NP_000089.1.
Formulation:	Supplied at 0.5 mg/ml in Tris saline, 0.02% sodium azide, pH7.3 with 0.5% bovine serum albumin. Aliquot and store at -20C. Minimize freezing and thawing.
Concentration:	lot specific
Purification:	Purified from goat serum by ammonium sulphate precipitation followed by antigen affinity chromatography using the immunizing peptide.
Conjugation:	Unconjugated
Storage:	Store at -20°C as received.
Stability:	Stable for 12 months from date of receipt.
Gene Name:	carnitine palmitoyltransferase 2
Database Link:	NP_000089 Entrez Gene 12896 Mouse Entrez Gene 25413 Rat Entrez Gene 489585 Dog Entrez Gene 1376 Human P23786
Synonyms:	CPT1; CPTASE; IIAE4
Protein Families:	Druggable Genome
Protein Pathways:	Fatty acid metabolism, PPAR signaling pathway



[View online »](#)

Product images:

(1ug/ml) staining of Human Liver lysate (35ug protein in RIPA buffer). Primary incubation was 1 hour. Detected by chemiluminescence.