

## Product datasheet for **TA311115**

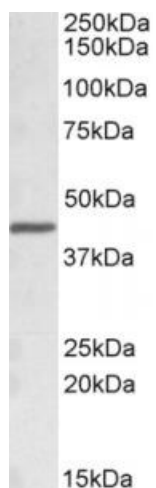
### ACAT1 Goat Polyclonal Antibody

#### Product data:

Product Type:	Primary Antibodies
Applications:	WB
Recommended Dilution:	WB: 0.1-0.3ug/ml, IF
Reactivity:	Human, Mouse, Rat (Expected from sequence similarity: Dog, Cow)
Host:	Goat
Clonality:	Polyclonal
Immunogen:	Peptide with sequence C-DEEYKRVDVFSKVPK, from the internal region of the protein sequence according to NP_000010.1.
Formulation:	Supplied at 0.5 mg/ml in Tris saline, 0.02% sodium azide, pH7.3 with 0.5% bovine serum albumin. Aliquot and store at -20C. Minimize freezing and thawing.
Concentration:	lot specific
Purification:	Purified from goat serum by ammonium sulphate precipitation followed by antigen affinity chromatography using the immunizing peptide.
Conjugation:	Unconjugated
Storage:	Store at -20°C as received.
Stability:	Stable for 12 months from date of receipt.
Gene Name:	acetyl-CoA acetyltransferase 1
Database Link:	<a href="#">NP_000010</a> <a href="#">Entrez Gene 25014 Rat</a> <a href="#">Entrez Gene 110446 Mouse</a> <a href="#">Entrez Gene 489421 Dog</a> <a href="#">Entrez Gene 38 Human</a> <a href="#">P24752</a>
Synonyms:	ACAT; MAT; T2; THIL
Protein Families:	Druggable Genome
Protein Pathways:	Butanoate metabolism, Fatty acid metabolism, Lysine degradation, Metabolic pathways, Propanoate metabolism, Pyruvate metabolism, Synthesis and degradation of ketone bodies, Terpenoid backbone biosynthesis, Tryptophan metabolism, Valine, leucine and isoleucine degradation



[View online »](#)

**Product images:**

(0.1 ug/ml) staining of Mouse Liver lysate (35ug protein in RIPA buffer). Primary incubation was 1 hour. Detected by chemiluminescence.