

Product datasheet for **TA311091**

Talin 2 (TLN2) Rabbit Monoclonal Antibody [Clone ID: EPR2536(2)]

Product data:

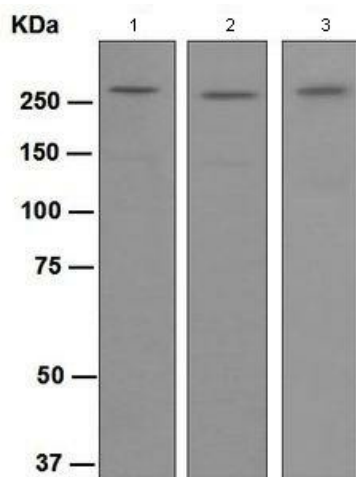
Product Type:	Primary Antibodies
Clone Name:	EPR2536(2)
Applications:	WB
Recommended Dilution:	WB: 1:50000 - 1:200000
Reactivity:	Mouse, Rat, Human
Host:	Rabbit
Isotype:	IgG
Clonality:	Monoclonal
Immunogen:	A synthetic peptide corresponding to residues in human Talin-2 was used as an immunogen.
Formulation:	PBS 49%,Sodium azide 0.01%,Glycerol 50%,BSA 0.05%
Purification:	Tissue culture supernatant
Conjugation:	Unconjugated
Storage:	Store at -20°C as received.
Stability:	Stable for 12 months from date of receipt.
Predicted Protein Size:	272 kDa
Gene Name:	talin 2
Database Link:	NP_055874 Entrez Gene 70549 MouseEntrez Gene 315776 RatEntrez Gene 83660 Human Q9Y4G6
Background:	Talin-2 is related to talin-1, a cytoskeletal protein that plays a significant role in the assembly of actin filaments and in spreading and migration of various cell types, including fibroblasts and osteoclasts. It has a different pattern of expression compared to talin-1 but, like talin-1, is thought to associate with unique transmembrane receptors to form novel linkages between extracellular matrices and the actin cytoskeleton (1).
Synonyms:	ILWEQ
Note:	Is unsuitable for Flow Cyt,ICC,IHC-P or IP.
Protein Families:	Druggable Genome



[View online »](#)

Protein Pathways: Focal adhesion

Product images:



Western blot - Talin 2 antibody [EPR2536 (2)]; All lanes : Anti-Talin 2 antibody [EPR2536 (2)] at 1/50000 dilution.Lane 1 : COS-1 cell lysate.Lane 2 : 293T cell lysate.Lane 3 : HeLa cell lysate.Lysates/proteins at 10 ug per lane.Secondary.HRP labelled goat anti-rabbit at 1/2000 dilution.Predicted band size : 272 kDa.Observed band size : 270 kDa.