

Product datasheet for **TA311078**

Stanniocalcin 1 (STC1) Rabbit Monoclonal Antibody [Clone ID: EPR6055]

Product data:

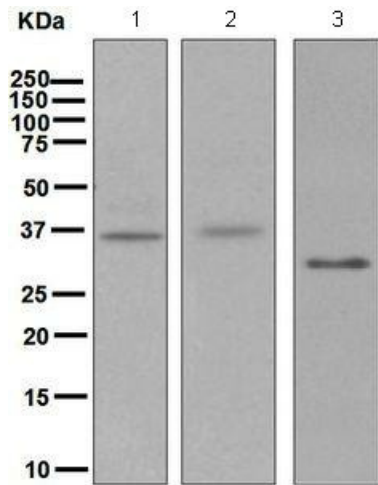
Product Type:	Primary Antibodies
Clone Name:	EPR6055
Applications:	WB
Recommended Dilution:	WB: 1:1000 - 1:10000; IP: 1:10 - 1:100
Reactivity:	Human (Does not react with: Mouse, Rat)
Host:	Rabbit
Isotype:	IgG
Clonality:	Monoclonal
Immunogen:	A synthetic peptide corresponding to residues on the C-terminus in human Stanniocalcin-1 was used as an immunogen.
Formulation:	pH: 7.40 Preservative: 0.01% Sodium azide; Constituents: 50% Glycerol, 0.05% BSA
Conjugation:	Unconjugated
Storage:	Store at -20°C as received.
Stability:	Stable for 12 months from date of receipt.
Gene Name:	stanniocalcin 1
Database Link:	NP_003146 Entrez Gene 20855 Mouse Entrez Gene 81801 Rat Entrez Gene 6781 Human P52823
Background:	Stanniocalcin-1 is a secreted, homodimeric glycoprotein that is expressed in a wide variety of tissues and may have autocrine or paracrine functions. It contains 11 conserved cysteine residues and is phosphorylated by protein kinase C exclusively on its serine residues. Stanniocalcin-1 may play a role in the regulation of renal and intestinal calcium and phosphate transport, cell metabolism, or cellular calcium/phosphate homeostasis. Overexpression of human stanniocalcin 1 in mice produces high serum phosphate levels, dwarfism, and increased metabolic rate. It has altered expression in hepatocellular, ovarian, and breast cancers (1).
Synonyms:	STC
Note:	Is unsuitable for ICC/IF or IHC-P.



[View online »](#)

Protein Families: Druggable Genome, Secreted Protein

Product images:



Western blot - Anti-Stanniocalcin 1 antibody [EPR6055]; All lanes : Anti-Stanniocalcin 1 antibody [EPR6055] at 1/1000 dilution.Lane 1 : Human Prostate lysate.Lane 2 : Human Ovary cancer lysate.Lane 3 : Human Plasma lysate.Lysates/proteins at 10 ug per lane.Secondary.Goat anti-Rabbit HRP at 1/2000 dilution.Predicted band size : 28 kDa.

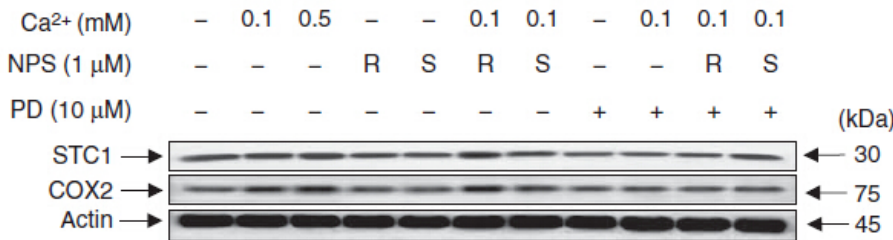
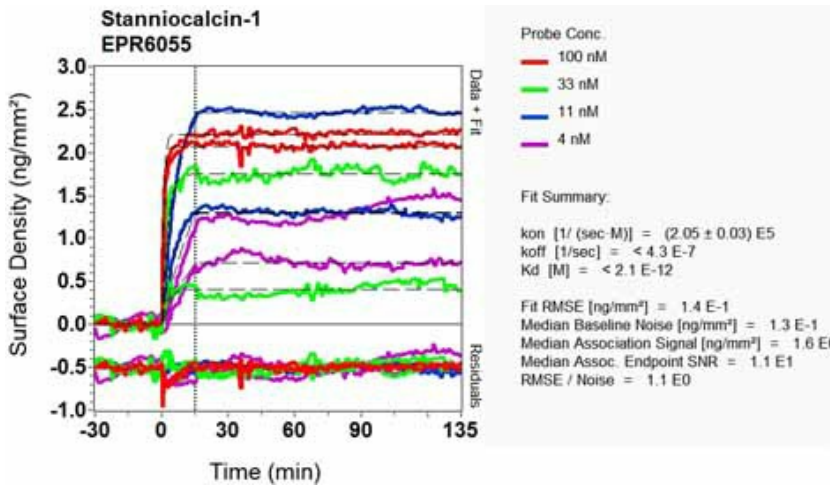


Figure from citation: Western Blot of STC1 protein level by using anti-STC1 antibody in isolated gill cells of Anguilla japonica. [View Citation](#)



Other-Anti-Stanniocalcin 1 antibody [EPR6055] (TA311078); Equilibrium disassociation constant (KD).