

Product datasheet for **TA311050**

Resistin (RETN) Rabbit Monoclonal Antibody [Clone ID: EP4738]

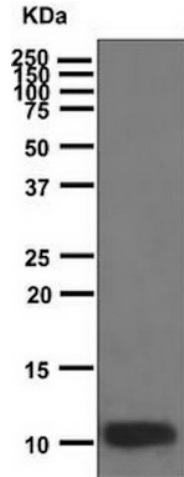
Product data:

Product Type:	Primary Antibodies
Clone Name:	EP4738
Applications:	WB
Recommended Dilution:	WB: 1:1000 - 1:10000
Reactivity:	Human (Does not react with: Mouse, Rat)
Host:	Rabbit
Isotype:	IgG
Clonality:	Monoclonal
Immunogen:	A synthetic peptide corresponding to residues in human Resistin was used as an immunogen.
Formulation:	pH: 7.40Preservative: 0.01% Sodium azide; Constituents: 50% Glycerol, 0.05% BSA
Conjugation:	Unconjugated
Storage:	Store at -20°C as received.
Stability:	Stable for 12 months from date of receipt.
Gene Name:	resistin
Database Link:	NP_001180303 Entrez Gene 57264 Mouse Entrez Gene 246250 Rat Entrez Gene 56729 Human Q9HD89
Background:	Resistin belongs to the family defined by the mouse resistin-like proteins. The characteristic feature of this family is the C-terminal stretch of 10 cys residues with identical spacing. The mouse homolog of Resistin is secreted by adipocytes, and it may be the hormone potentially linking obesity to type II diabetes (1).
Synonyms:	ADSF; FIZZ3; RETN1; RSTN; XCP1
Note:	Is unsuitable for IHC-P or IP.
Protein Families:	Druggable Genome, Secreted Protein

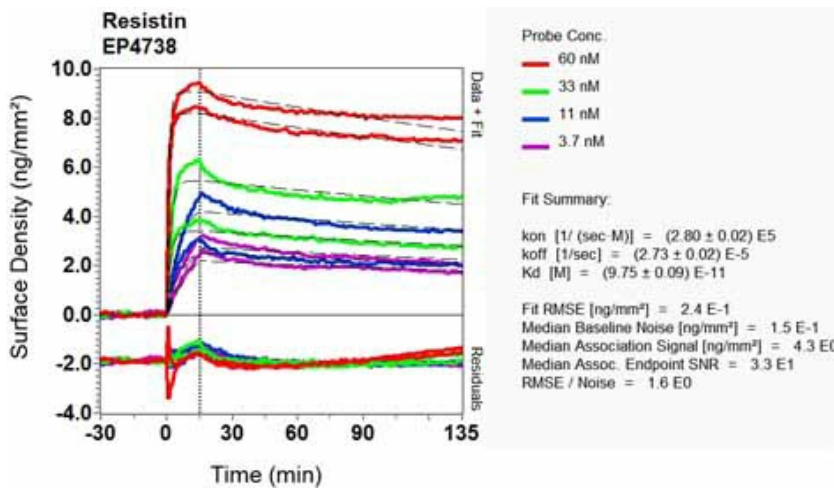


[View online »](#)

Product images:



Western blot - Anti-Resistin antibody [EP4738]; Anti-Resistin antibody [EP4738] at 1/1000 dilution + Recombinant Human Resistin protein at 0.005 ug.Secondary.Goat anti-Rabbit HRP at 1/2000 dilution.Predicted band size : 11 kDa.Observed band size : 11 kDa.



Other-Anti-Resistin antibody [EP4738] (TA311050); Equilibrium disassociation constant (KD).