

Product datasheet for **TA311013**

OCM2 Rabbit Monoclonal Antibody [Clone ID: EPR5310]

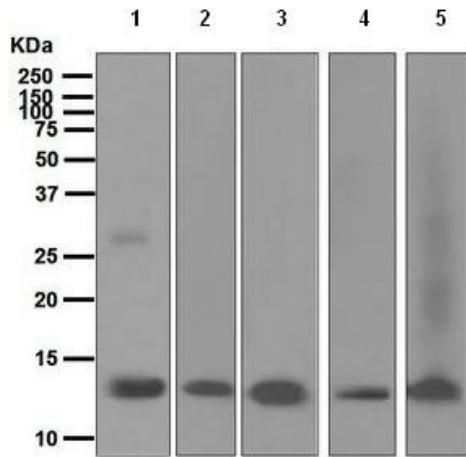
Product data:

Product Type:	Primary Antibodies
Clone Name:	EPR5310
Applications:	WB
Recommended Dilution:	WB: 1:1000 - 1:10000
Reactivity:	Mouse, Rat, Human
Host:	Rabbit
Isotype:	IgG
Clonality:	Monoclonal
Immunogen:	A synthetic peptide corresponding to residues in human Oncomodulin was used as an immunogen.
Formulation:	PBS 49%,Sodium azide 0.01%,Glycerol 50%,BSA 0.05%
Purification:	Tissue culture supernatant
Conjugation:	Unconjugated
Storage:	Store at -20°C as received.
Stability:	Stable for 12 months from date of receipt.
Predicted Protein Size:	12 kDa
Gene Name:	oncomodulin 2
Database Link:	NP_006179 Entrez Gene 25503 Rat Entrez Gene 4951 Human P0CE71
Background:	Oncomodulin is a high-affinity calcium ion-binding protein that belongs to the superfamily of calmodulin proteins in the parvalbumin family, also known as the EF-hand proteins (1, 2). Oncomodulin is also a potent axon-promoting factor for retinal ganglion cells (3).
Synonyms:	OCM
Note:	Is unsuitable for ICC,IHC-P or IP.

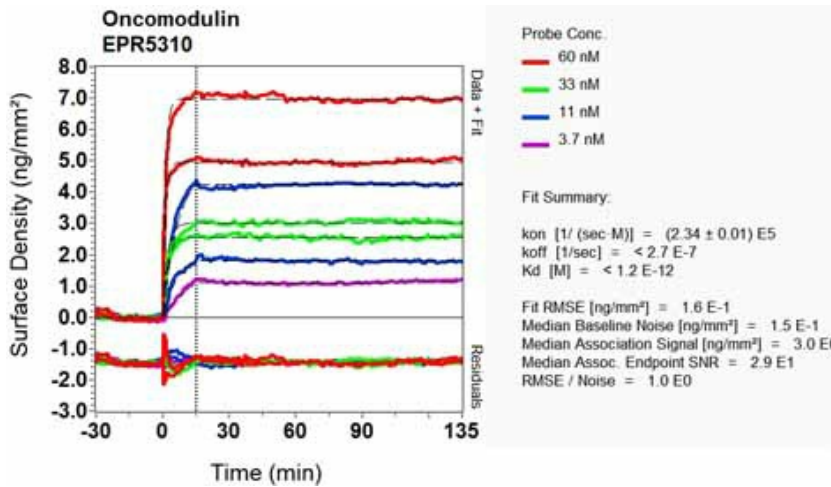


[View online »](#)

Product images:



Western blot - OCM2 antibody [EPR5310]; All lanes : Anti-OCM2 antibody [EPR5310] at 1/1000 dilution.Lane 1 : Human placenta lysate.Lane 2 : Mouse heart lysate.Lane 3 : Rat heart lysate.Lane 4 : Fetal heart lysate.Lane 5 : Mouse kidney lysate.Lysates/proteins at 10 ug per lane.Secondary.HRP labelled goat anti-rabbit at 1/2000 dilution.Predicted band size : 12 kDa.Observed band size : 12 kDa.



Other-Anti-OCM2 antibody [EPR5310] (TA311013); Equilibrium disassociation constant (KD).