

Product datasheet for **TA310972**

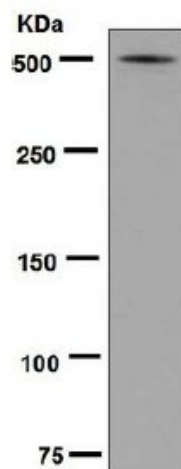
Lipoprotein a (LPA) Rabbit Monoclonal Antibody [Clone ID: EPR6474]

Product data:

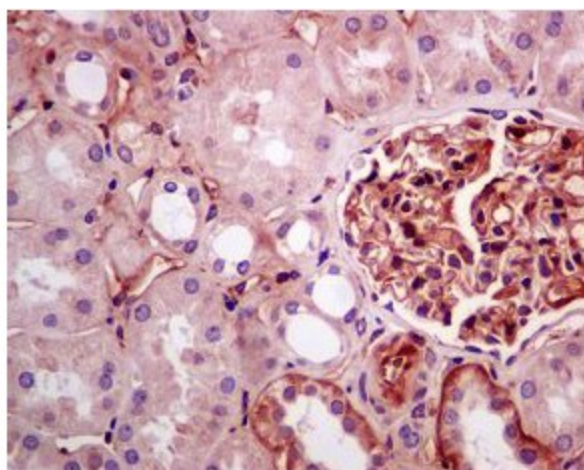
Product Type:	Primary Antibodies
Clone Name:	EPR6474
Applications:	IHC, WB
Recommended Dilution:	WB 1:10000 - 1:50000; IHC-P 1:100-1:250
Reactivity:	Human (Does not react with: Mouse, Rat)
Host:	Rabbit
Isotype:	IgG
Clonality:	Monoclonal
Immunogen:	A synthetic peptide corresponding to residues in human Apolipoprotein(a) was used as an immunogen.
Formulation:	pH: 7.20; Preservative: 0.01% Sodium azide; Constituents: 49% PBS, 50% Glycerol, 0.05% BSA
Conjugation:	Unconjugated
Storage:	Store at -20°C as received.
Stability:	Stable for 12 months from date of receipt.
Gene Name:	lipoprotein(a)
Database Link:	NP_005568 Entrez Gene 4018 Human
Background:	Apolipoprotein(a) is a serine proteinase that inhibits the activity of tissue-type plasminogen activator I. It constitutes a substantial portion of lipoprotein(a) and is proteolytically cleaved, resulting in fragments that attach to atherosclerotic lesions and promote thrombogenesis. Elevated plasma levels of Apolipoprotein(a) are linked to atherosclerosis. Depending on the individual, it contains 2-43 copies of kringle-type domains (1).
Synonyms:	AK38; APOA; LP
Note:	Is unsuitable for IP and IF/ICC
Protein Families:	Druggable Genome



[View online »](#)

Product images:

Western blot - Anti-Lipoprotein a antibody [EPR6474]; Anti-Lipoprotein a antibody [EPR6474] at 1/20000 dilution + Human plasma lysate at 10 ug.Secondary.HRP labelled goat anti-rabbit at 1/2000 dilution.Predicted band size : 501 kDa.Observed band size : 500 kDa.



Immunohistochemistry (Formalin/PFA-fixed paraffin-embedded sections) - Anti-Lipoprotein a antibody [EPR6474]; TA310972 at 1/100 staining Lipoprotein a in paraffin embedded Human kidney tissue by immunohistochemistry.