

Product datasheet for **TA310958**

CD51 (ITGAV) Rabbit Monoclonal Antibody [Clone ID: EPR5583]

Product data:

Product Type:	Primary Antibodies
Clone Name:	EPR5583
Applications:	FC, WB
Recommended Dilution:	WB: 1:1000 - 1:10000; FC: 1:10 - 1:100
Reactivity:	Mouse, Rat, Human
Host:	Rabbit
Isotype:	IgG
Clonality:	Monoclonal
Immunogen:	A synthetic peptide corresponding to residues in the intracellular domain of human CD51 / Integrin alpha-V was used as an immunogen.
Formulation:	pH: 7.40 Preservative: 0.01% Sodium azide Constituents: 50% Glycerol, 0.05% BSA
Purification:	Tissue culture supernatant
Conjugation:	Unconjugated
Storage:	Store at -20°C as received.
Stability:	Stable for 12 months from date of receipt.
Predicted Protein Size:	86, 116 kDa
Gene Name:	integrin subunit alpha V
Database Link:	NP_001138471 Entrez Gene 16410 Mouse Entrez Gene 296456 Rat Entrez Gene 3685 Human P06756



[View online »](#)

Background: Integrins are heterodimeric integral membrane proteins composed of an alpha chain and a beta chain. The I-domain containing CD51 / Integrin alpha-V undergoes post-translational cleavage to yield disulfide-linked heavy chain (125 kDa) and light chain (25 kDa), which combine with multiple integrin beta chains to form different integrins. Among the known associating beta chains (beta chains 1,3,5,6, and 8; ITGB1, ITGB3, ITGB5, ITGB6, and ITGB8), each can interact with extracellular matrix ligands; the CD51 / Integrin alpha-V, perhaps the most studied of these, is referred to as the Vitronectin receptor (VNR). In addition to adhesion, many integrins are known to facilitate signal transduction (1).

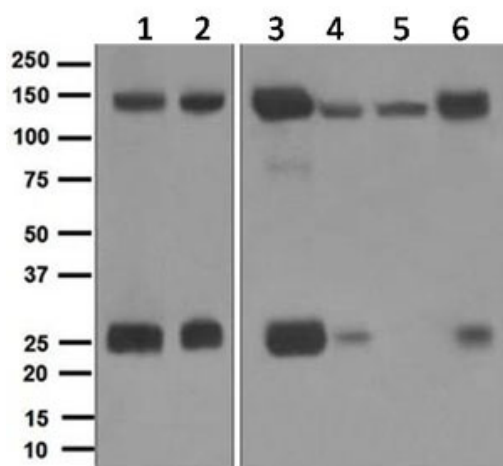
Synonyms: CD51; MSK8; VNRA; VTNR

Note: Is unsuitable for ICC,IHC-P or IP.

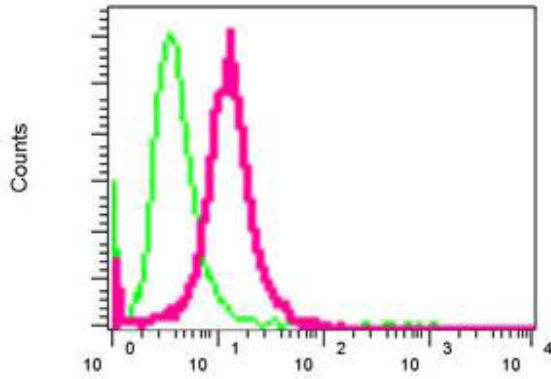
Protein Families: Druggable Genome, ES Cell Differentiation/IPS, Transmembrane

Protein Pathways: Arrhythmogenic right ventricular cardiomyopathy (ARVC), Cell adhesion molecules (CAMs), Dilated cardiomyopathy, ECM-receptor interaction, Focal adhesion, Hypertrophic cardiomyopathy (HCM), Pathways in cancer, Regulation of actin cytoskeleton, Small cell lung cancer

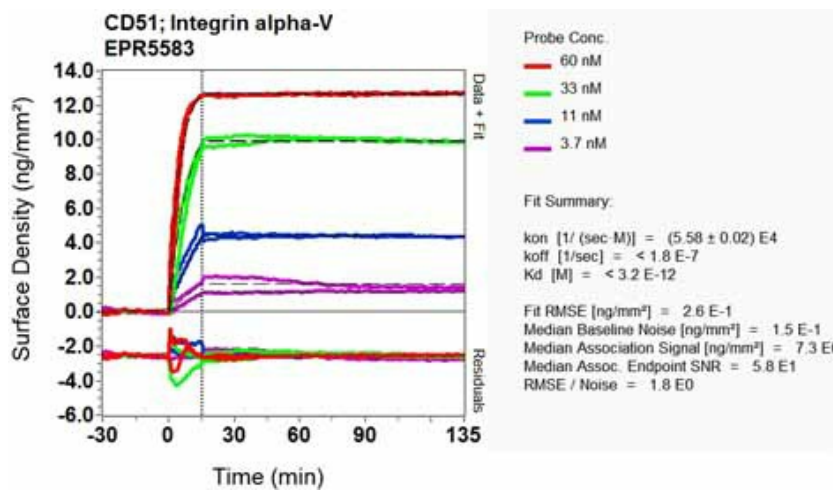
Product images:



Western blot - Anti-Integrin alpha V + beta 6 antibody [EPR5583]; All lanes : Anti-Integrin alpha V + beta 6 antibody [EPR5583] at 1/1000 dilution. Lane 1 : A549 cell lysates. Lane 2 : A431 cell lysates. Lane 3 : C6 cell lysates. Lane 4 : RAW264.7 cell lysates. Lane 5 : PC12 cell lysates. Lane 6 : NIH 3T3 cell lysates. Lysates/proteins at 10 ug per lane. Secondary. HRP labelled goat anti-rabbit at 1/2000 dilution. Predicted band size : 86, 116 kDa.



Flow Cytometry - Anti-Integrin alpha V + beta 6 antibody [EPR5583]; TA310958 at 1/10 dilution staining Integrin alpha V + beta 6 in permeabilized A549 cells by Flow cytometry (red) or a rabbit IgG (negative) (green).



Other-Anti-Integrin alpha V + beta 6 antibody [EPR5583] (TA310958); Equilibrium disassociation constant (KD).