

Product datasheet for **TA310943**

WNT5B Rabbit Monoclonal Antibody [Clone ID: EPR7135(B)]

Product data:

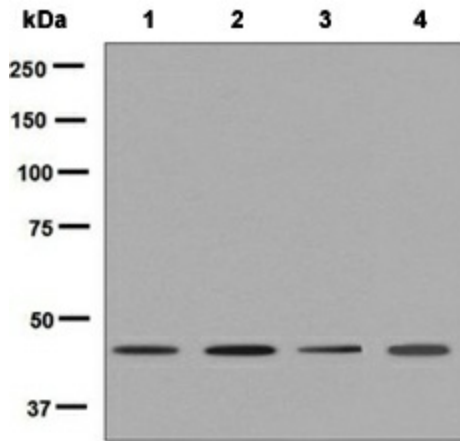
Product Type:	Primary Antibodies
Clone Name:	EPR7135(B)
Applications:	FC, WB
Recommended Dilution:	WB: 1:1000 - 1:10000; FC: 1:10 - 1:100
Reactivity:	Human (Does not react with: Mouse, Rat)
Host:	Rabbit
Isotype:	IgG
Clonality:	Monoclonal
Immunogen:	A synthetic peptide corresponding to residues near the C-terminus of human WNT5B was used as an immunogen.
Formulation:	pH: 7.20; Preservative: 0.01% Sodium azide; Constituents: 49% PBS, 50% Glycerol, 0.05% BSA
Conjugation:	Unconjugated
Storage:	Store at -20°C as received.
Stability:	Stable for 12 months from date of receipt.
Gene Name:	Wnt family member 5B
Database Link:	NP_110402 Entrez Gene 22419 Mouse Entrez Gene 282582 Rat Entrez Gene 81029 Human Q9H1J7
Background:	WNT5B is a member of the WNT protein family. It is a protein which shows 94% and 80% amino acid identity to the mouse Wnt5b protein and the human WNT5A protein, respectively (1). WNT5B is a ligand for members of the frizzled family of seven transmembrane receptors. It may be a signaling molecule which affects the development of discrete regions of tissues (2).
Synonyms:	MGC2648
Note:	Is unsuitable for ICC,IHC-P or IP.
Protein Families:	Secreted Protein



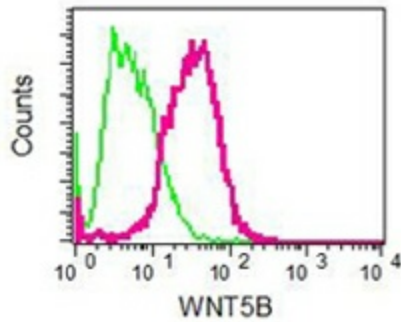
[View online »](#)

Protein Pathways: Basal cell carcinoma, Hedgehog signaling pathway, Melanogenesis, Pathways in cancer, Wnt signaling pathway

Product images:



Western blot - Anti-Wnt5b antibody [EPR7135 (B)]; All lanes : Anti-Wnt5b antibody [EPR7135 (B)] at 1/1000 dilution. Lane 1 : HT-1376 cell lysate. Lane 2 : HepG2 cell lysate. Lane 3 : 293T cell lysate. Lane 4 : SH-SY5Y cell lysate. Lysates/proteins at 10 ug per lane. Secondary. Goat-anti-rabbit HRP at 1/2000 dilution. Predicted band size : 40 kDa.



Anti-Wnt5b antibody [EPR7135 (B)]; Flow cytometric analysis of Wnt5b in HepG2 cells using TA310943 at 1/10 dilution (Red) compared to a nonspecific negative control antibody (Green).