

Product datasheet for **TA310880**

STIP1 Rabbit Monoclonal Antibody [Clone ID: EPR6605]

Product data:

Product Type:	Primary Antibodies
Clone Name:	EPR6605
Applications:	IHC, WB
Recommended Dilution:	WB: 1:10000 - 1:50000; IP: 1:10 - 1:100; IHC-P: 1:250 - 1:500; ICC/IF: 1:50 - 1:100
Reactivity:	Mouse, Rat, Human
Host:	Rabbit
Isotype:	IgG
Clonality:	Monoclonal
Immunogen:	A synthetic peptide corresponding to residues in human STIP1 was used as an immunogen.
Formulation:	pH: 7.20 Preservative: 0.01% Sodium azide Constituents: 49% PBS, 50% Glycerol, 0.05% BSA
Purification:	Tissue culture supernatant
Conjugation:	Unconjugated
Storage:	Store at -20°C as received.
Stability:	Stable for 12 months from date of receipt.
Predicted Protein Size:	63 kDa
Gene Name:	stress induced phosphoprotein 1
Database Link:	NP_006810 Entrez Gene 20867 Mouse Entrez Gene 192277 Rat Entrez Gene 10963 Human P31948
Background:	STIP1 is an adaptor protein that coordinates the functions of HSP70 and HSP90 in protein folding. It is thought to assist in the transfer of proteins from HSP70 to HSP90 by binding both HSP90 and substrate-bound HSP70. STIP1 also stimulates the ATPase activity of HSP70 and inhibits the ATPase activity of HSP90, suggesting that it regulates both the conformations and ATPase cycles of these chaperones (1).
Synonyms:	HEL-S-94n; HOP; IEF-SSP-3521; P60; STI1; STI1L



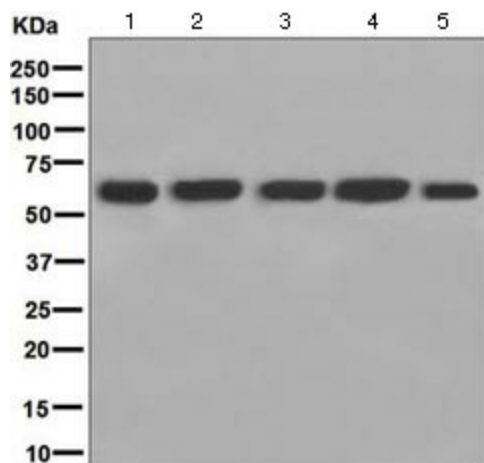
[View online »](#)

Note: Is unsuitable for Flow Cyt.

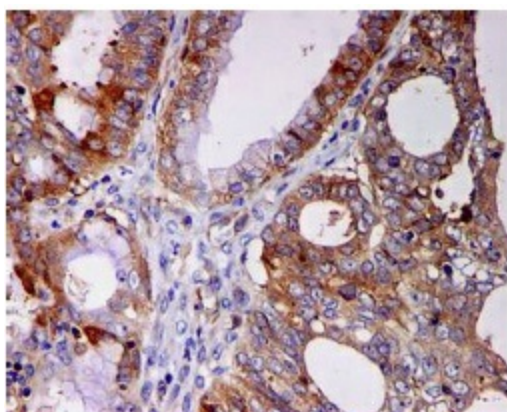
Protein Families: Stem cell - Pluripotency

Protein Pathways: Prion diseases

Product images:



Western blot - Anti-STIP1 antibody [EPR6605]; All lanes : Anti-STIP1 antibody [EPR6605] at 1/10000 dilution. Lane 1 : Jurkat cell lysate. Lane 2 : HeLa cell lysate. Lane 3 : BxPC3 cell lysate. Lane 4 : HepG2 cell lysate. Lane 5 : SK OV 3 cell lysate. Lysates/proteins at 10 ug per lane. Secondary. HRP labelled goat anti-rabbit at 1/2000 dilution. Predicted band size : 63 kDa.



Immunohistochemistry (Formalin/PFA-fixed paraffin-embedded sections) - Anti-STIP1 antibody [EPR6605]; TA310880, at a dilution of 1/250, staining STIP1 in paraffin-embedded Human ovarian carcinoma tissue by Immunohistochemistry.