

## Product datasheet for **TA310771**

### **POT1 Rabbit Monoclonal Antibody [Clone ID: EPR6319]**

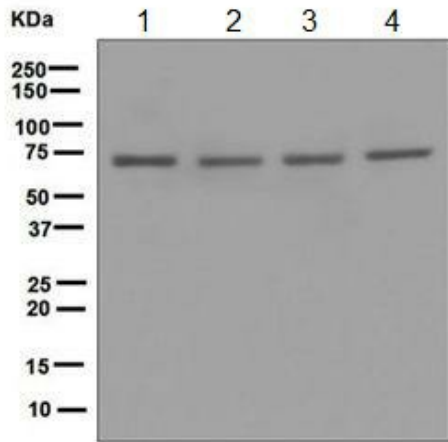
#### **Product data:**

Product Type:	Primary Antibodies
Clone Name:	EPR6319
Applications:	WB
Recommended Dilution:	WB: 1:1000 - 1:10000
Reactivity:	Human (Does not react with: Mouse, Rat)
Host:	Rabbit
Isotype:	IgG
Clonality:	Monoclonal
Immunogen:	A synthetic peptide corresponding to residues in human POT1 was used as an immunogen.
Formulation:	PBS 49%,Sodium azide 0.01%,Glycerol 50%,BSA 0.05%
Conjugation:	Unconjugated
Storage:	Store at -20°C as received.
Stability:	Stable for 12 months from date of receipt.
Gene Name:	protection of telomeres 1
Database Link:	<a href="#">NP_001036059</a> <a href="#">Entrez Gene 25913 Human</a> <a href="#">Q9NUX5</a>
Background:	POT1 is a member of the telombin family and is a nuclear protein involved in telomere maintenance. Specifically, this protein functions as a member of a multi-protein complex that binds to the TTAGGG repeats of telomeres, regulating telomere length and protecting chromosome ends from illegitimate recombination, catastrophic chromosome instability, and abnormal chromosome segregation. Increased transcriptional expression of POT1 is associated with stomach carcinogenesis and its progression (1).
Synonyms:	CMM10; GLM9; HPOT1
Note:	Is unsuitable for Flow Cyt,ICC/IF,IHC-P or IP.



[View online »](#)

Product images:



Western blot - Anti-POT1 antibody [EPR6319]; All lanes : Anti-POT1 antibody [EPR6319] at 1/1000 dilution.Lane 1 : K562 cell lysate.Lane 2 : HepG2 cell lysate.Lane 3 : 293T cell lysate.Lane 4 : HeLa cell lysate.Lysates/proteins at 10 ug per lane.Secondary.Standard HRP labelled goat anti-rabbit at 1/2000 dilution.Predicted band size : 71 kDa.

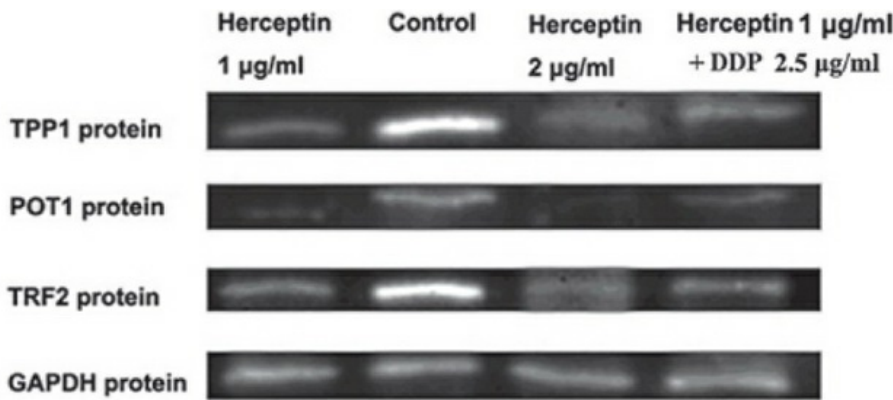
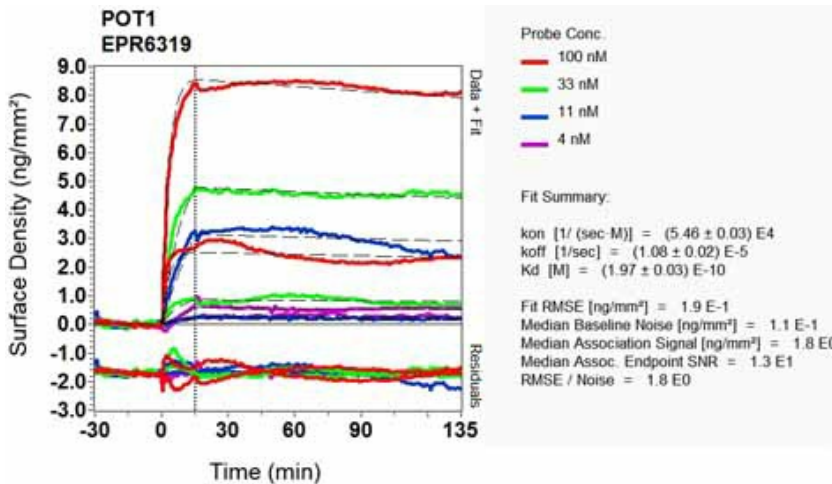


Figure from citation: Western blot analysis of POT1 protein expression by using anti-POT1 antibody in NCI-N87 cells. [View Citation](#)



Other-Anti-POT1 antibody [EPR6319] (TA310771); Equilibrium disassociation constant (KD).