

Product datasheet for **TA310693**

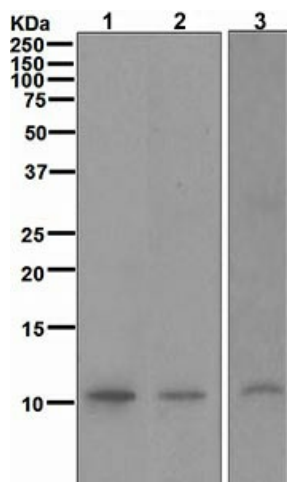
MLLT11 Rabbit Monoclonal Antibody [Clone ID: CHCR115]

Product data:

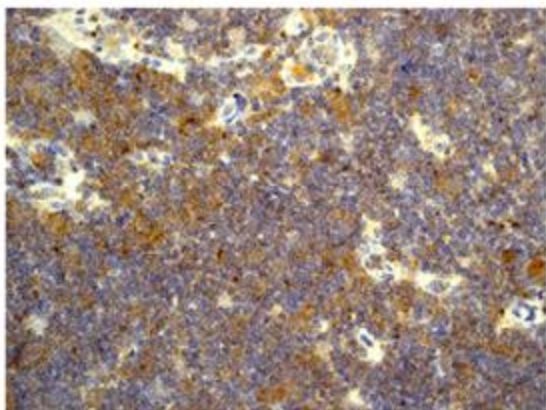
Product Type:	Primary Antibodies
Clone Name:	CHCR115
Applications:	IHC, WB
Recommended Dilution:	WB: 1:1000 - 1:10000; IHC-P: 1:100 - 1:250; ICC: 1:250 - 1:500
Reactivity:	Human (Does not react with: Mouse, Rat)
Host:	Rabbit
Isotype:	IgG
Clonality:	Monoclonal
Immunogen:	A synthetic peptide corresponding to residues in human MLLT11 / AF1Q was used as an immunogen.
Formulation:	PBS 49%, Sodium azide 0.01%, Glycerol 50%, BSA 0.05%
Conjugation:	Unconjugated
Storage:	Store at -20°C as received.
Stability:	Stable for 12 months from date of receipt.
Gene Name:	myeloid/lymphoid or mixed-lineage leukemia; translocated to, 11
Database Link:	NP_006809 Entrez Gene 10962 Human Q13015
Background:	MLLT11 / AF1Q has been demonstrated to be fused with a number of translocation partners in cases of leukemia. Translocations that fused MLLT11 / AF1Q on a chromosomal band in acute myelomonocytic leukemia have been demonstrated. The N-terminal portion of MLLT11 / AF1Q is critical for leukemogenesis in certain translocations. It was found to be highly expressed in the thymus but not in peripheral lymphoid tissues. In contrast to its restricted distribution in normal hematopoietic tissue, MLLT11 / AF1Q was expressed in all leukemic cell lines tested.
Synonyms:	AF1Q
Note:	Is unsuitable for Flow Cyt or IP.



[View online »](#)

Product images:

Western blot - MLLT11 antibody [CHCR115]; All lanes : Anti-MLLT11 antibody [CHCR115] at 1/1000 dilution. Lane 1 : Jurkat cell lysate. Lane 2 : K562 cell lysate. Lane 3 : Molt4 cell lysate. Lysates/proteins at 10 ug per lane. Predicted band size : 10 kDa.



Immunohistochemistry (Formalin/PFA-fixed paraffin-embedded sections) - MLLT11 antibody [CHCR115]; Immunohistochemical analysis of MLLT11 expression in paraffin-embedded Human thymus tissue using TA310693 at 1/100 dilution.