

Product datasheet for **TA310647**

Plasma Kallikrein 1B (KLKB1) Rabbit Monoclonal Antibody [Clone ID: **EPR5707**]

Product data:

Product Type:	Primary Antibodies
Clone Name:	EPR5707
Applications:	IHC, WB
Recommended Dilution:	WB: 1:1000 - 1:10000; IP: 1:10 - 1:100; IHC-P: 1:50 - 1:100
Reactivity:	Human (Does not react with: Mouse, Rat)
Host:	Rabbit
Isotype:	IgG
Clonality:	Monoclonal
Immunogen:	A synthetic peptide corresponding to residues in the C-terminus of human KLKB1 was used as an immunogen.
Formulation:	pH: 7.40 Preservative: 0.01% Sodium azide Constituents: 50% Glycerol, 0.05% BSA
Purification:	Tissue culture supernatant
Conjugation:	Unconjugated
Storage:	Store at -20°C as received.
Stability:	Stable for 12 months from date of receipt.
Predicted Protein Size:	71 kDa
Gene Name:	kallikrein B1
Database Link:	NP_000883 Entrez Gene 16621 Mouse Entrez Gene 25048 Rat Entrez Gene 3818 Human P03952



[View online »](#)

Background:

KLKB1 (Plasma prekallikrein) is a glycoprotein that participates in the surface-dependent activation of blood coagulation, fibrinolysis, kinin generation and inflammation. It is synthesized in the liver and secreted into the blood as a single polypeptide chain. KLKB1 is converted to plasma kallikrein by factor XIIa by the cleavage of an internal Arg-Ile bond. This protein therefore is composed of a heavy chain and a light chain held together by a disulphide bond. The heavy chain originates from the amino-terminal end of the zymogen and contains 4 tandem repeats of 90 or 91 amino acids. Each repeat harbors a novel structure called the apple domain. The heavy chain is required for the surface-dependent pro-coagulant activity of KLKB1. The light chain contains the active site or catalytic domain of the enzyme and is homologous to the trypsin family of serine proteases. KLKB1 deficiency causes a prolonged activated partial thromboplastin time in patients (1).

Synonyms:

KLK3; PPK

Note:

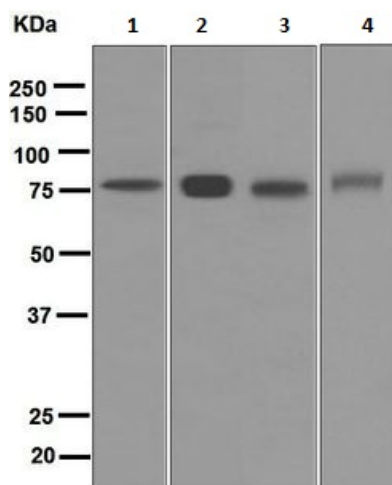
Does not react with Mouse, Rat

Protein Families:

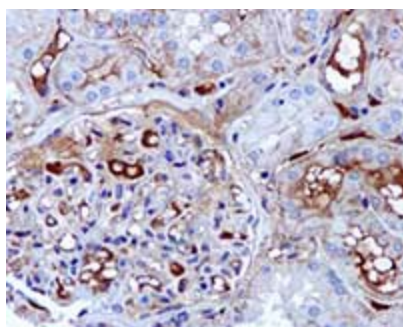
Druggable Genome, Protease

Protein Pathways:

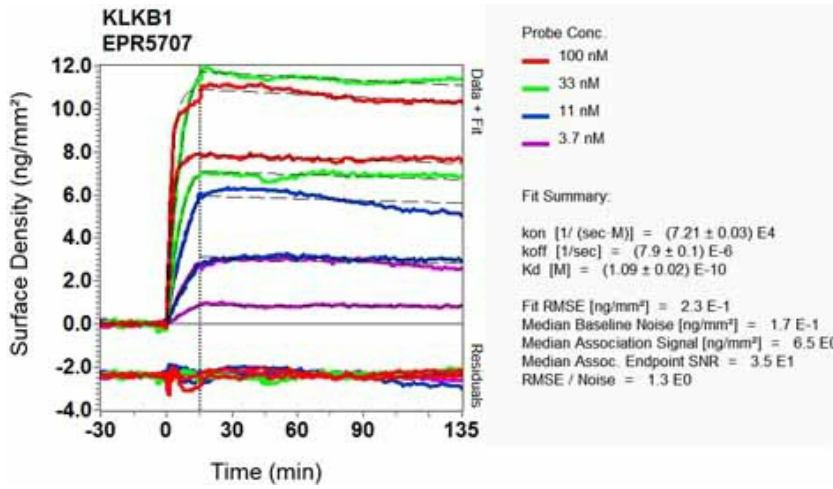
Complement and coagulation cascades

Product images:

Western blot - Anti-Plasma Kallikrein 1B antibody [EPR5707]; All lanes : Anti-Plasma Kallikrein 1B antibody [EPR5707] at 1/1000 dilution. Lane 1 : Human breast cancer lysate. Lane 2 : Human plasma lysate. Lane 3 : Human ovary lysate. Lane 4 : Fetal liver lysate. Lysates/proteins at 10 ug per lane. Secondary. HRP labelled Goat anti Rabbit IgG at 1/2000 dilution. Predicted band size : 71 kDa. Observed band size : 80 kDa.



Immunohistochemistry (Formalin/PFA-fixed paraffin-embedded sections) - Anti-Plasma Kallikrein 1B antibody [EPR5707]; TA310647, at 1/50 dilution, staining Plasma Kallikrein 1B in paraffin-embedded Human kidney tissue by Immunohistochemistry.



Other-Anti-Plasma Kallikrein 1B antibody [EPR5707] (TA310647); Equilibrium disassociation constant (KD).