

## Product datasheet for **TA310615**

### IL11RA Rabbit Monoclonal Antibody [Clone ID: EPR5446]

#### Product data:

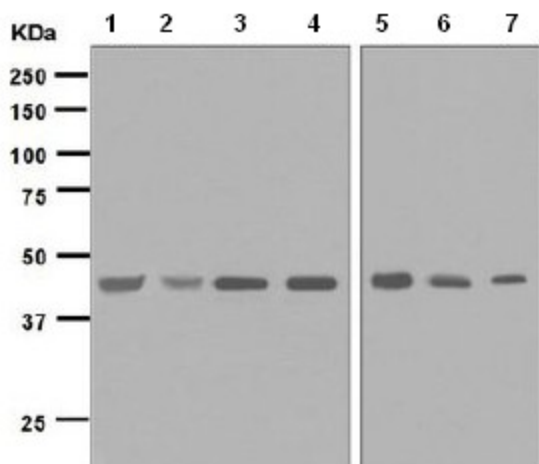
Product Type:	Primary Antibodies
Clone Name:	EPR5446
Applications:	FC, IHC, WB
Recommended Dilution:	WB: 1:1000 - 1:10000; IHC-P: 1:500 - 1:1000; FC: 1:100 - 1:1000; ICC/IF: 1:250 - 1:500
Reactivity:	Human (Does not react with: Mouse, Rat)
Host:	Rabbit
Isotype:	IgG
Clonality:	Monoclonal
Immunogen:	A synthetic peptide corresponding to residues in human IL-11R alpha was used as an immunogen.
Formulation:	pH: 7.20; Preservative: 0.01% Sodium azide; Constituents: 49% PBS, 50% Glycerol, 0.05% BSA
Conjugation:	Unconjugated
Storage:	Store at -20°C as received.
Stability:	Stable for 12 months from date of receipt.
Gene Name:	interleukin 11 receptor subunit alpha
Database Link:	<a href="#">NP_001136256</a> <a href="#">Entrez Gene 3590 Human</a> <a href="#">Q14626</a>
Background:	Interleukin 11 is a stromal cell-derived cytokine that belongs to a family of pleiotropic and redundant cytokines that use the gp130 transducing subunit in their high affinity receptors. IL-11R alpha is a member of the hematopoietic cytokine receptor family. This particular receptor is very similar to ciliary neurotrophic factor, since both contain an extracellular region with a 2-domain structure composed of an immunoglobulin-like domain and a cytokine receptor-like domain (1).
Synonyms:	CRSDA
Note:	Is unsuitable for IP.
Protein Families:	Druggable Genome, Transmembrane



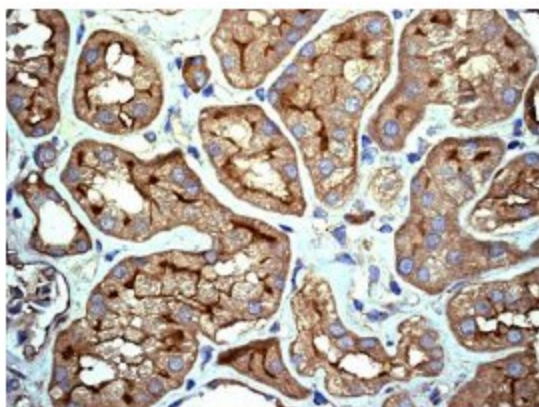
[View online »](#)

**Protein Pathways:** Cytokine-cytokine receptor interaction, Hematopoietic cell lineage, Jak-STAT signaling pathway

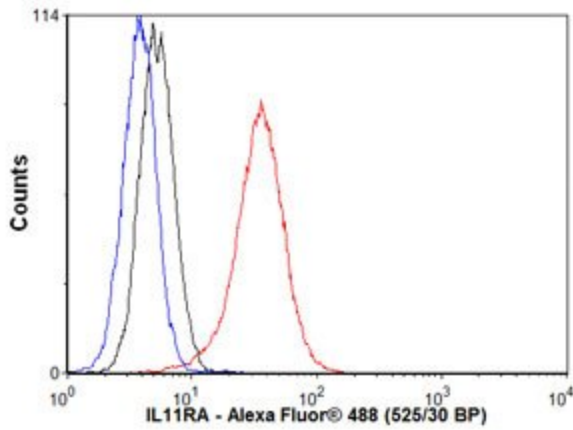
**Product images:**



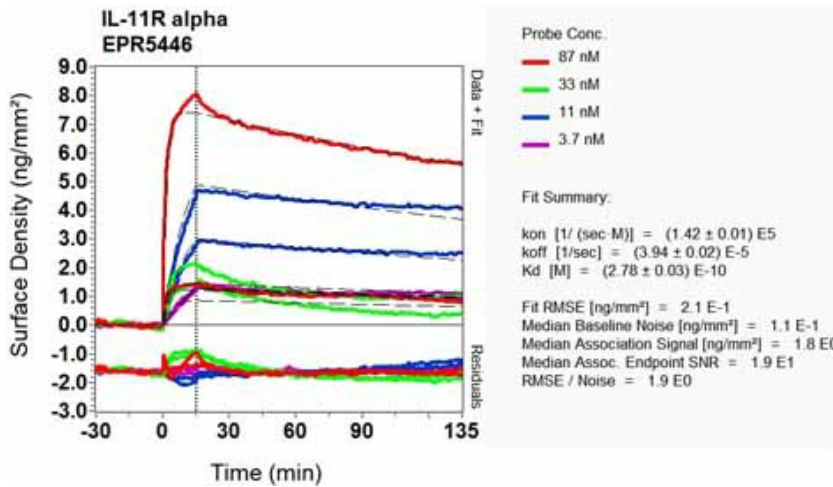
Western blot - Anti-IL11RA antibody [EPR5446]; All lanes : Anti-IL11RA antibody [EPR5446] at 1/1000 dilution.Lane 1 : 293T lysate.Lane 2 : Saos2 lysate.Lane 3 : A673 lysate.Lane 4 : PC3 lysate.Lane 5 : Hut78 lysate.Lane 6 : K562 lysate.Lane 7 : TF1 lysate.Lysates/proteins at 10 ug per lane.Secondary.Goat anti-Rabbit HRP at 1/2000 dilution.Predicted band size : 45 kDa.Observed band size : 45 kDa.



Immunohistochemistry (Formalin/PFA-fixed paraffin-embedded sections) - Anti-IL11RA antibody [EPR5446]; TA310615 at 1/500 staining IL11RA in paraffin embedded Human Kidney tissue by immunohistochemistry.



Flow Cytometry - Anti-IL11RA antibody; Overlay histogram showing K562 cells stained with TA310615 (red line). The secondary antibody used was Alexa Fluor 488 goat anti-rabbit IgG (H&L) at 1:2000. Isotype control antibody (black line) was rabbit IgG (monoclonal) used under the same conditions. Unlabelled sample (blue line) was also used as a control. This antibody gave a positive signal in K562 cells under the same conditions.



Other-Anti-IL11RA antibody [EPR5446] (TA310615); Equilibrium dissociation constant (KD).