

Product datasheet for **TA310536**

GLI1 Rabbit Monoclonal Antibody [Clone ID: EPR4523]

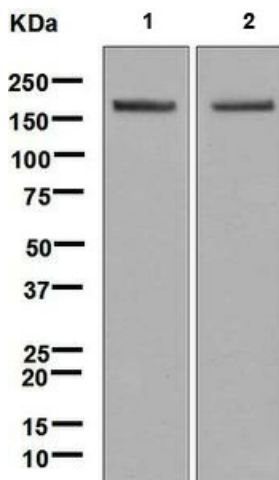
Product data:

Product Type:	Primary Antibodies
Clone Name:	EPR4523
Applications:	IF, IHC, WB
Recommended Dilution:	WB: 1:1000 - 1:10000; ICC/IF: 1:250 - 1:500; IHC-P: 1:250 - 1:500
Reactivity:	Human (Does not react with: Mouse, Rat)
Host:	Rabbit
Isotype:	IgG
Clonality:	Monoclonal
Immunogen:	A synthetic peptide corresponding to residues in human Gli-1 was used as an immunogen.
Formulation:	Preservative: 0.01% Sodium azide; Constituents: 40% Glycerol, 0.05% BSA, 59% PBS
Purification:	Protein A purified
Conjugation:	Unconjugated
Storage:	Store at -20°C as received.
Stability:	Stable for 12 months from date of receipt.
Gene Name:	GLI family zinc finger 1
Database Link:	NP_001153517 Entrez Gene 14632 Mouse Entrez Gene 2735 Human P08151
Background:	Gli-1 is a member of the Kruppel family of zinc finger proteins. This transcription factor is activated by the sonic hedgehog signal transduction cascade and regulates stem cell proliferation. The activity and nuclear localization of this protein is negatively regulated by p53 in an inhibitory loop (1).
Synonyms:	GLI
Note:	Is unsuitable for Flow Cyt or IP.
Protein Families:	Adult stem cells, Cancer stem cells, Druggable Genome, Embryonic stem cells, ES Cell Differentiation/IPs, Stem cell relevant signaling - DSL/Notch pathway, Transcription Factors
Protein Pathways:	Basal cell carcinoma, Hedgehog signaling pathway, Pathways in cancer

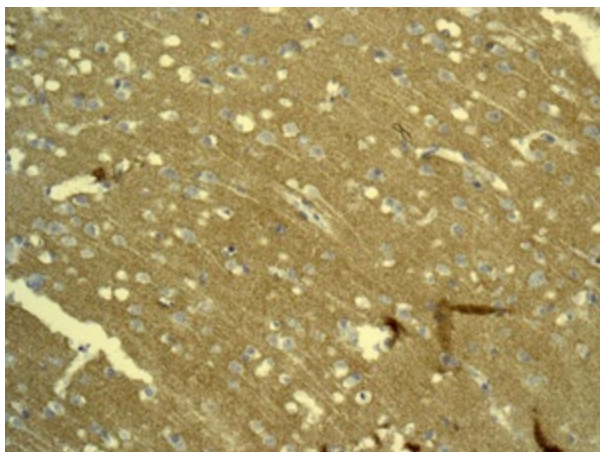


[View online »](#)

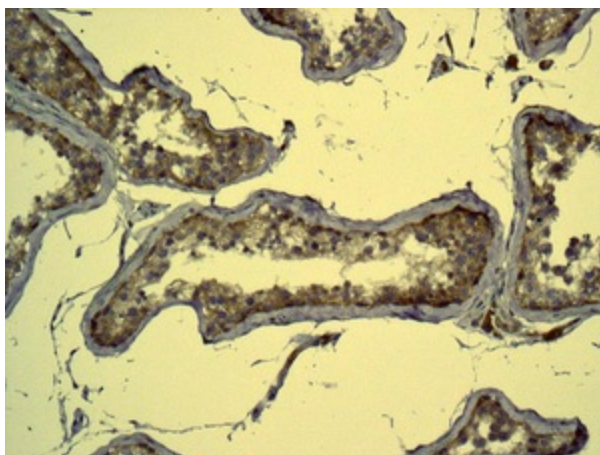
Product images:



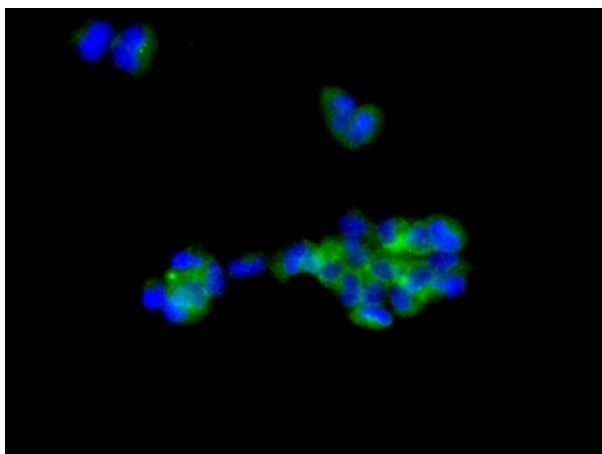
Western blot - Anti-Gli1 antibody [EPR4523]; All lanes : Anti-Gli1 antibody [EPR4523] at 1/1000 dilution. Lane 1 : RMS13 cell lysate. Lane 2 : A673 cell lysate. Lysates/proteins at 10 ug per lane. Secondary. HRP-conjugated goat anti-rabbit IgG polyclonal at 1/2000 dilution. Predicted band size : 118 kDa.



Immunohistochemistry (Formalin/PFA-fixed paraffin-embedded sections) - Anti-Gli1 antibody [EPR4523]; Immunohistochemical analysis of paraffin-embedded Human brain tissue labelling Gli1 with TA310536 at 1/250 dilution.



Immunohistochemistry (Formalin/PFA-fixed paraffin-embedded sections) - Anti-Gli1 antibody [EPR4523]; Immunohistochemical analysis of paraffin-embedded Human testis tissue labelling Gli1 with TA310536 at 1/250 dilution.



Immunocytochemistry/ Immunofluorescence - Anti-Gli1 antibody [EPR4523]; Immunofluorescent analysis of A673 cells labelling Gli1 with TA310536 at 1/250 dilution.