

## Product datasheet for **TA310440**

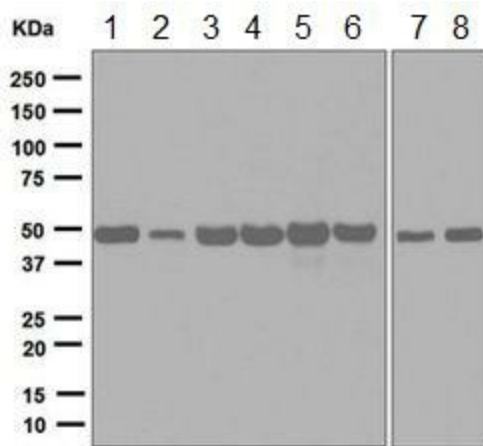
### EEF1G Rabbit Monoclonal Antibody [Clone ID: EPR7200]

#### Product data:

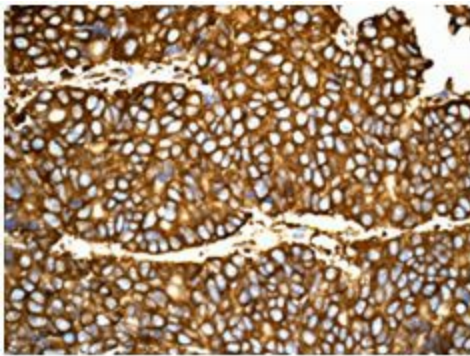
Product Type:	Primary Antibodies
Clone Name:	EPR7200
Applications:	IF, IHC, WB
Recommended Dilution:	WB: 1:10000 - 1:50000; IP: 1:10 - 1:100; IHC-P: 1:250 - 1:500; FC: 1:10 - 1:100; ICC/IF: 1:100 - 1:250
Reactivity:	Mouse, Rat, Human
Host:	Rabbit
Isotype:	IgG
Clonality:	Monoclonal
Immunogen:	A synthetic peptide corresponding to residues in human EEF1G was used as an immunogen.
Formulation:	pH: 7.20 Preservative: 0.01% Sodium azide Constituents: 49% PBS, 50% Glycerol, 0.05% BSA
Purification:	Tissue culture supernatant
Conjugation:	Unconjugated
Storage:	Store at -20°C as received.
Stability:	Stable for 12 months from date of receipt.
Predicted Protein Size:	50 kDa
Gene Name:	eukaryotic translation elongation factor 1 gamma
Database Link:	<a href="#">NP_001395</a> <a href="#">Entrez Gene 67160 Mouse</a> <a href="#">Entrez Gene 293725 Rat</a> <a href="#">Entrez Gene 1937 Human</a> <a href="#">P26641</a>
Background:	EEF1G is a subunit of the elongation factor-1 complex, which is responsible for the enzymatic delivery of aminoacyl tRNAs to the ribosome. This subunit contains an N-terminal glutathione transferase domain, which may be involved in regulating the assembly of multisubunit complexes containing this elongation factor and aminoacyl-tRNA synthetases (1).
Synonyms:	EF1G; GIG35



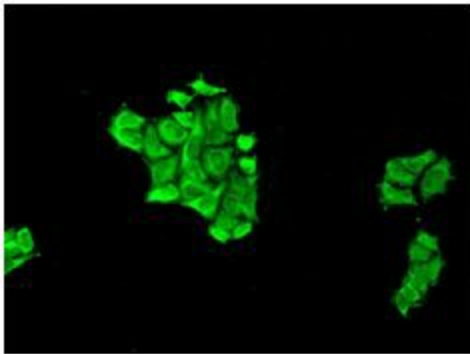
[View online »](#)

**Product images:**


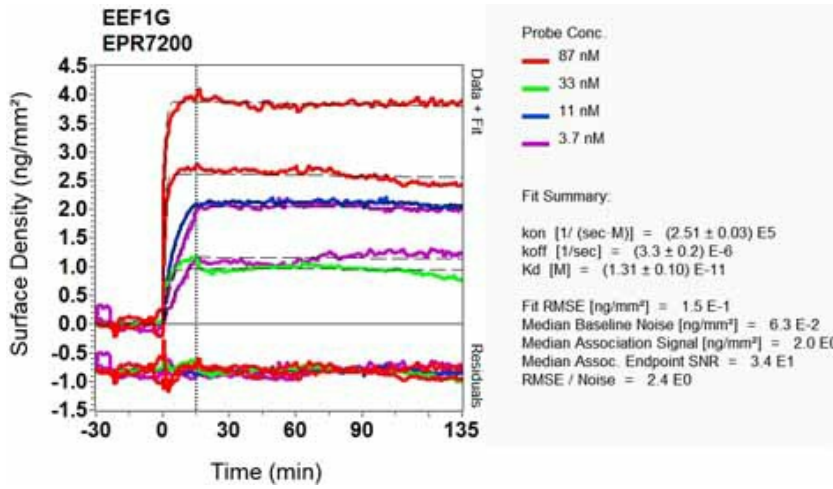
Western blot - Anti-EEF1G antibody [EPR7200]; All lanes : Anti-EEF1G antibody [EPR7200] at 1/10000 dilution.Lane 1 : 293T cell lysate.Lane 2 : HL60 cell lysate.Lane 3 : C6 cell lysate.Lane 4 : RAW 264.7 cell lysate.Lane 5 : PC12 cell lysate.Lane 6 : NIH 3T3 cell lysate.Lane 7 : HepG2 cell lysate.Lane 8 : HeLa cell lysate.Lysates/proteins at 10 ug per lane.Secondary.Goat anti-Rabbit HRP at 1/2000 dilution.Predicted band size : 50 kDa.



Immunohistochemistry (Formalin/PFA-fixed paraffin-embedded sections) - Anti-EEF1G antibody [EPR7200]; TA310440 at 1/250 dilution staining EEF1G in paraffin-embedded Human pancreatic adenocarcinoma tissue by Immunohistochemistry.



Immunocytochemistry/ Immunofluorescence - Anti-EEF1G antibody [EPR7200]; TA310440 at 1/100 dilution staining EEF1G in HeLa cells by Immunofluorescence.



Other-Anti-EEF1G antibody [EPR7200] (TA310440); Equilibrium disassociation constant (KD).