

Product datasheet for **TA310349**

CPS1 Rabbit Monoclonal Antibody [Clone ID: EPR7493]

Product data:

Product Type:	Primary Antibodies
Clone Name:	EPR7493
Applications:	IHC, WB
Recommended Dilution:	WB: 1:1000 - 1:10000; IP: 1:10 - 1:100; IHC-P: 1:100 - 1:250; ICC/IF: 1:50 - 1:100
Reactivity:	Mouse, Rat, Human
Host:	Rabbit
Isotype:	IgG
Clonality:	Monoclonal
Immunogen:	A synthetic peptide corresponding to residues in human CPS1 was used as an immunogen.
Formulation:	pH: 7.20 Preservative: 0.01% Sodium azide Constituents: 49% PBS, 50% Glycerol, 0.05% BSA
Purification:	Tissue culture supernatant
Conjugation:	Unconjugated
Storage:	Store at -20°C as received.
Stability:	Stable for 12 months from date of receipt.
Predicted Protein Size:	165 kDa
Gene Name:	carbamoyl-phosphate synthase 1
Database Link:	NP_001116105 Entrez Gene 227231 MouseEntrez Gene 497840 RatEntrez Gene 1373 Human P31327
Background:	The mitochondrial enzyme catalyzes synthesis of carbamoyl phosphate from ammonia and bicarbonate. This reaction is the first committed step of the urea cycle, which is important in the removal of excess urea from cells. CPS1 also represents a core mitochondrial nucleoid protein. The shortest isoform may not be localized to the mitochondrion. Mutations in CPS1 have been associated with carbamoyl phosphate synthetase deficiency, susceptibility to persistent pulmonary hypertension, and susceptibility to venoocclusive disease after bone marrow transplantation (1).



[View online »](#)

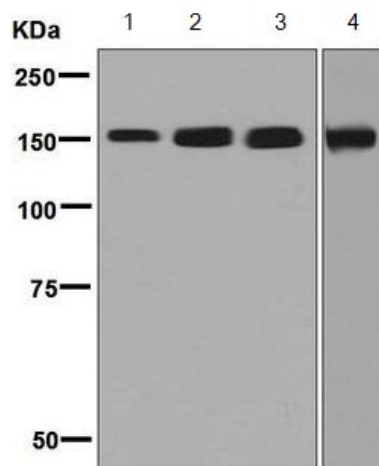
Synonyms: CPSASE1; PHN

Note: Is unsuitable for Flow Cyt.

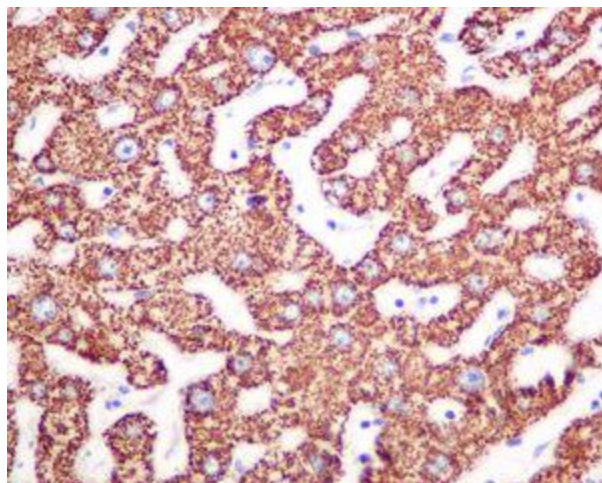
Protein Families: Druggable Genome

Protein Pathways: Alanine, aspartate and glutamate metabolism, Arginine and proline metabolism, Metabolic pathways, Nitrogen metabolism

Product images:



Western blot - Anti-CPS1 antibody [EPR7493]; All lanes : Anti-CPS1 antibody [EPR7493] at 1/1000 dilution. Lane 1 : Fetal liver cell lysate. Lane 2 : Mouse liver cell lysate. Lane 3 : Rat liver cell lysate. Lane 4 : HeLa cell lysate. Predicted band size : 165 kDa. Observed band size : 150 kDa.



Immunohistochemistry (Formalin/PFA-fixed paraffin-embedded sections) - Anti-CPS1 antibody [EPR7493]; TA310349, at 1/100 dilution staining CPS1 in formalin fixed paraffin embedded Human liver tissue by immunohistochemistry