

Product datasheet for **TA310265**

IL2 Receptor alpha (IL2RA) Rabbit Monoclonal Antibody [Clone ID: EPR6452]

Product data:

Product Type:	Primary Antibodies
Clone Name:	EPR6452
Applications:	IHC
Recommended Dilution:	IHC-P 1:250 - 1:500; ICC 1:100-1:250
Reactivity:	Human (Does not react with: Mouse, Rat)
Host:	Rabbit
Isotype:	IgG
Clonality:	Monoclonal
Immunogen:	A recombinant protein fragment corresponding to human CD25 was used as an immunogen.
Formulation:	pH: 7.20 Preservative: 0.01% Sodium azide Constituents: 49% PBS, 50% Glycerol, 0.05% BSA
Purification:	Tissue culture supernatant
Conjugation:	Unconjugated
Storage:	Store at -20°C as received.
Stability:	Stable for 12 months from date of receipt.
Gene Name:	interleukin 2 receptor subunit alpha
Database Link:	NP_000408 Entrez Gene 16184 Mouse Entrez Gene 25704 Rat Entrez Gene 3559 Human P01589
Background:	CD25, or interleukin 2 (IL2) receptor alpha (IL2RA), and beta (IL2RB) chains, together with the common gamma chain (IL2RG), constitute the high-affinity IL2 receptor. Homodimeric alpha chains (CD25) result in low-affinity receptor, while homodimeric beta (IL2RB) chains produce a medium-affinity receptor. Normally an integral-membrane protein, soluble CD25 has been isolated and determined to result from extracellular proteolysis. Mutations in CD25 are associated with interleukin 2 receptor alpha deficiency (1).
Synonyms:	CD25; IDDM10; IL2R; p55; TCGFR
Note:	Does not react with Mouse, Rat; Is unsuitable for IP

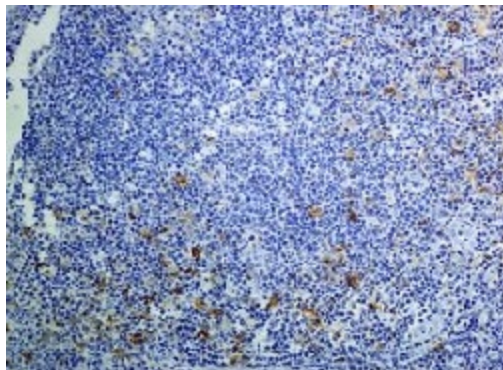


[View online »](#)

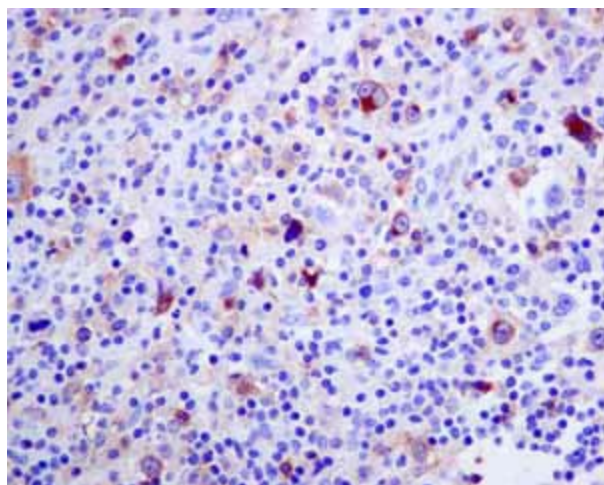
Protein Families: Druggable Genome, ES Cell Differentiation/IPS, Transmembrane

Protein Pathways: Cytokine-cytokine receptor interaction, Endocytosis, Hematopoietic cell lineage, Jak-STAT signaling pathway

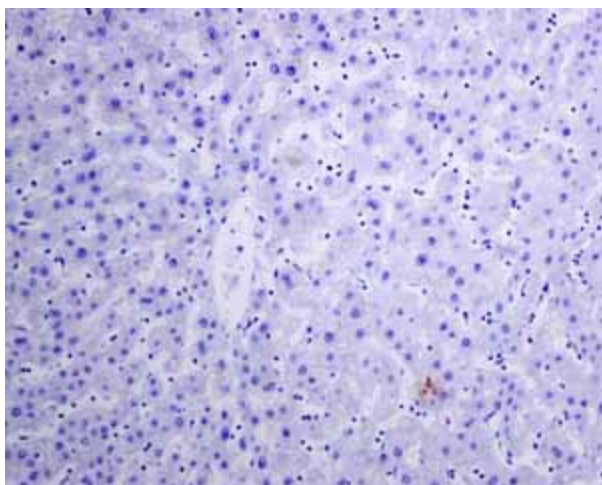
Product images:



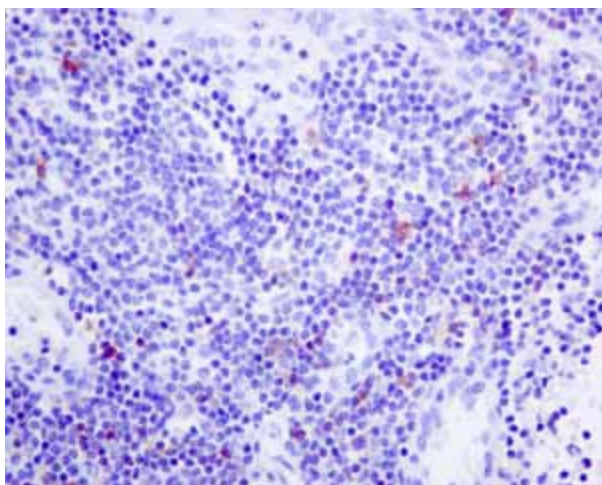
Immunohistochemistry (Formalin/PFA-fixed paraffin-embedded sections) - Anti-IL2 Receptor alpha antibody [EPR6452]; TA310265, at 1/250 dilution, staining IL2 Receptor alpha in paraffin-embedded Human tonsil tissue by Immunohistochemistry.



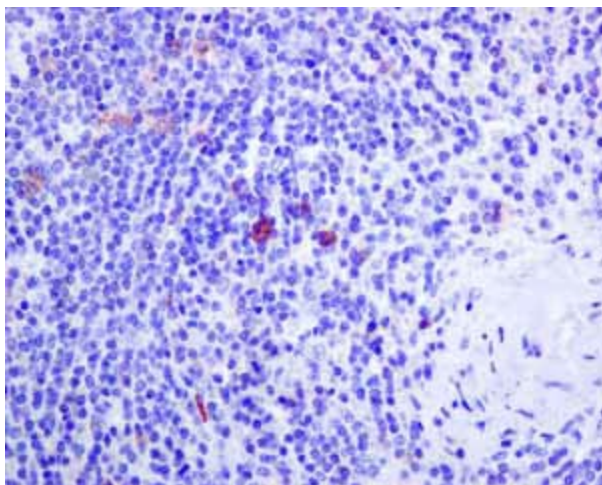
Immunohistochemistry (Formalin/PFA-fixed paraffin-embedded sections)-Anti-IL2 Receptor alpha antibody [EPR6452] (TA310265); TA310265 showing positive staining in Hodgkin's lymphoma tissue.



Immunohistochemistry (Formalin/PFA-fixed paraffin-embedded sections)-Anti-IL2 Receptor alpha antibody [EPR6452] (TA310265); TA310265 showing negative staining in Normal liver tissue.



Immunohistochemistry (Formalin/PFA-fixed paraffin-embedded sections)-Anti-IL2 Receptor alpha antibody [EPR6452] (TA310265); TA310265 showing positive staining in Normal thymus tissue.



Immunohistochemistry (Formalin/PFA-fixed paraffin-embedded sections)-Anti-IL2 Receptor alpha antibody [EPR6452] (TA310265); TA310265 showing positive staining in Normal spleen tissue.