

## Product datasheet for **TA310177**

### AGL Rabbit Monoclonal Antibody [Clone ID: **EPR8880**]

#### Product data:

Product Type:	Primary Antibodies
Clone Name:	EPR8880
Applications:	IHC, WB
Recommended Dilution:	WB: 1:1000 - 1:10000; IHC-P: 1:100 - 1:250; ICC: 1:100 - 1:250; FC: 1:100 - 1:500
Reactivity:	Mouse, Rat, Human
Host:	Rabbit
Isotype:	IgG
Clonality:	Monoclonal
Immunogen:	A synthetic peptide corresponding to residues in human AGL was used as an immunogen.
Formulation:	pH: 7.20 Preservative: 0.01% Sodium azide Constituents: 49% PBS, 50% Glycerol, 0.05% BSA
Purification:	Tissue culture supernatant
Conjugation:	Unconjugated
Storage:	Store at -20°C as received.
Stability:	Stable for 12 months from date of receipt.
Predicted Protein Size:	175 kDa
Gene Name:	amylo-alpha-1, 6-glucosidase, 4-alpha-glucanotransferase
Database Link:	<a href="#">NP_000019</a> <a href="#">Entrez Gene 77559 Mouse</a> <a href="#">Entrez Gene 362029 Rat</a> <a href="#">Entrez Gene 178 Human</a> <a href="#">P35573</a>
Background:	AGL is the glycogen debrancher enzyme which is involved in glycogen degradation. This enzyme has two independent catalytic activities which occur at different sites on the protein: a 4-alpha-glucotransferase activity and a amylo-1,6-glucosidase activity. Mutations in AGL are associated with glycogen storage disease although a wide range of enzymatic and clinical variability occurs which may be due to tissue-specific alternative splicing (1).
Synonyms:	GDE



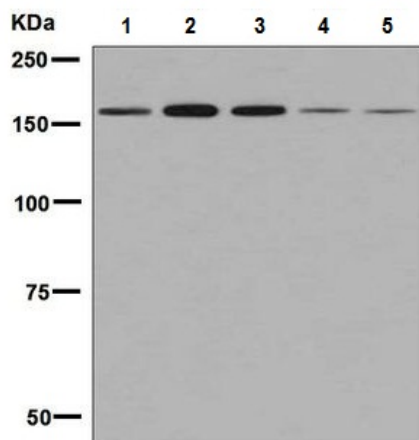
[View online »](#)

**Note:** Is unsuitable for IP.

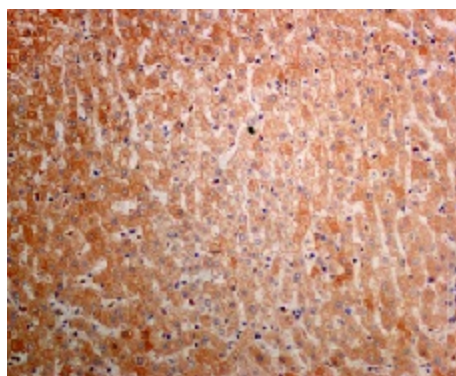
**Protein Families:** Druggable Genome

**Protein Pathways:** Metabolic pathways, Starch and sucrose metabolism

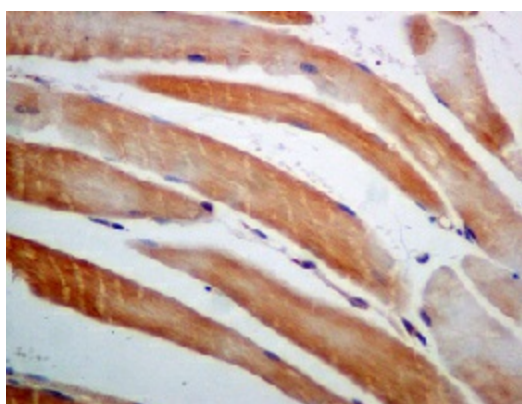
**Product images:**



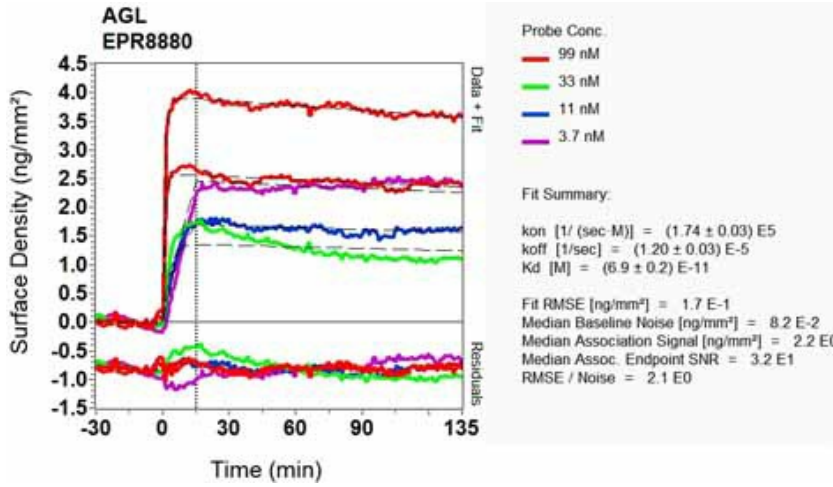
Western blot - Anti-AGL antibody [EPR8880]; All lanes : Anti-AGL antibody [EPR8880] at 1/1000 dilution. Lane 1 : Human fetal muscle lysate. Lane 2 : Mouse muscle lysate. Lane 3 : Human fetal heart lysate. Lane 4 : K562 cell lysate. Lane 5 : 293T cell lysate. Lysates/proteins at 10 ug per lane. Secondary. HRP labelled goat anti-rabbit at 1/2000 dilution. Predicted band size : 175 kDa.



Immunohistochemistry (Formalin/PFA-fixed paraffin-embedded sections) - Anti-AGL antibody [EPR8880]; Immunohistochemical analysis of paraffin-embedded Human liver tissue labelled with TA310177 at 1/100 dilution.



Immunohistochemistry (Formalin/PFA-fixed paraffin-embedded sections) - Anti-AGL antibody [EPR8880]; Immunohistochemical analysis of paraffin-embedded Human muscle tissue labelled with TA310177 at 1/100 dilution.



Other-Anti-AGL antibody [EPR8880] (TA310177);  
Equilibrium disassociation constant (KD).