

Product datasheet for **TA310155**

beta Actin (ACTB) Mouse Monoclonal Antibody [Clone ID: 8H10]

Product data:

Product Type:	Primary Antibodies
Clone Name:	8H10
Applications:	WB
Recommended Dilution:	WB 1:1000 - 1:10000
Reactivity:	Human, Mouse, Rat, Monkey, Dog
Host:	Mouse
Isotype:	IgG
Clonality:	Monoclonal
Immunogen:	Beta-actin N-terminal peptide-KLH conjugates
Formulation:	PBS, pH 7.4 with 0.05% sodium azide.
Concentration:	lot specific
Purification:	Affinity purified
Conjugation:	Unconjugated
Storage:	Store at -20°C as received.
Stability:	Stable for 12 months from date of receipt.
Gene Name:	actin, beta
Database Link:	NP_001092 Entrez Gene 11461 Mouse Entrez Gene 81822 Rat Entrez Gene 403580 Dog Entrez Gene 574285 Monkey Entrez Gene 60 Human P60709
Background:	Actins are highly conserved proteins that are involved in cell motility, structure and integrity, processes that are crucial for tissue development and the development of organism. The actin cytoskeleton is one of the principal drivers of cell motility and is capable of responding to complex signaling cascades. Recent evidence suggests that it may play key roles in regulating apoptosis and aging. beta actin is one of six different actin isoforms which have been identified. Like GAPDH, β -actin is constitutively expressed at high levels in almost all tissues and cell lines making it ideal for use as a loading control marker in immunoblots.
Synonyms:	BRWS1; PS1TP5BP1

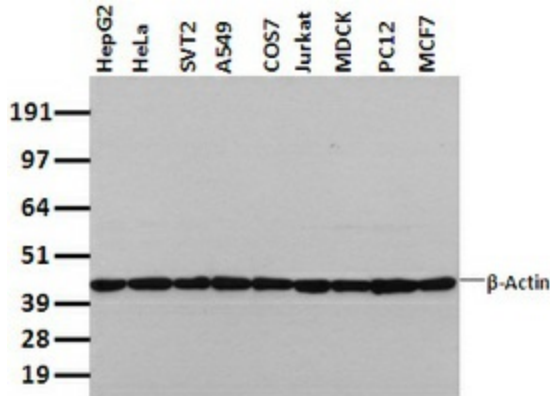


[View online »](#)

Protein Families: ES Cell Differentiation/IPS

Protein Pathways: Adherens junction, Arrhythmogenic right ventricular cardiomyopathy (ARVC), Dilated cardiomyopathy, Focal adhesion, Hypertrophic cardiomyopathy (HCM), Leukocyte transendothelial migration, Pathogenic Escherichia coli infection, Regulation of actin cytoskeleton, Tight junction, Vibrio cholerae infection, Viral myocarditis

Product images:



Western blot analysis of extracts (35ug) from 9 different cell lines by using anti-beta-Actin monoclonal antibody (HepG2: human; HeLa: human; SVT2: mouse; A549: human; COS7: monkey; Jurkat: human; MDCK: canine; PC12: rat; MCF7: human).

C

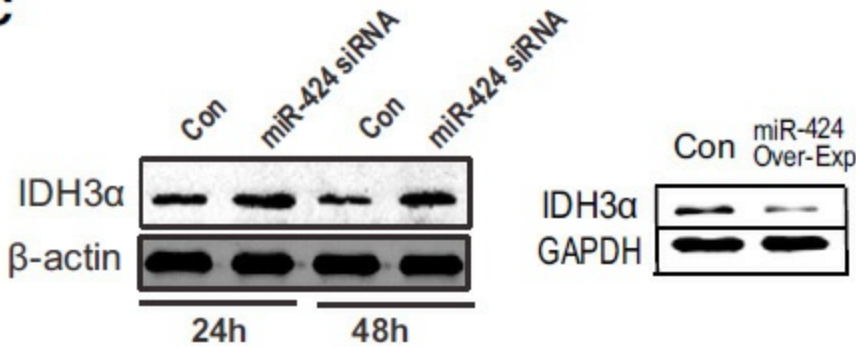


Figure from citation: Western blot analysis of ACTB protein level by using anti-ACTB antibody in fibroblasts, ACTB used as loading control. [View Citation](#)

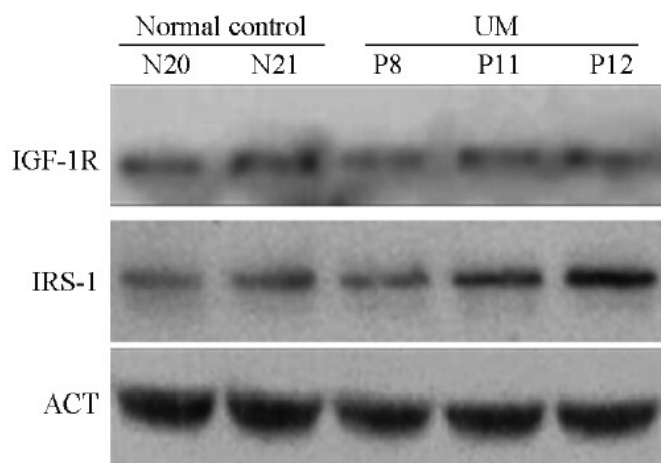


Figure from citation: Western Blot of ACTB (beta-actin) protein level by using anti-ACTB antibody in normal human uveal (control) and human uveal melanoma (UM) samples. Dilution: 1:1000 [View Citation](#)