

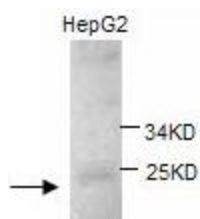
Product datasheet for **TA310151**

RAN Rabbit Polyclonal Antibody

Product data:

| | |
|-----------------------|---|
| Product Type: | Primary Antibodies |
| Applications: | WB |
| Recommended Dilution: | WB: 1:200 |
| Reactivity: | Human, Mouse, Rat |
| Host: | Rabbit |
| Isotype: | IgG |
| Clonality: | Polyclonal |
| Immunogen: | Synthetic peptide conjugated to KLH |
| Formulation: | PBS, pH 7.4 with 0.05% sodium azide. |
| Concentration: | lot specific |
| Purification: | Protein A purified |
| Conjugation: | Unconjugated |
| Storage: | Store at -20°C as received. |
| Stability: | Stable for 12 months from date of receipt. |
| Gene Name: | RAN, member RAS oncogene family |
| Database Link: | NP_006316 Entrez Gene 19384 Mouse Entrez Gene 84509 Rat Entrez Gene 5901 Human P62826 |
| Synonyms: | ARA24; Gsp1; TC4 |
| Protein Families: | Druggable Genome, Transcription Factors |

Product images:



Western blot analysis of HepG2 cell lysates with anti-RAN antibody (1:200). This antibody identified a band of ~23kDa in HepG2 cell lysates.



[View online »](#)