

Product datasheet for **TA310150**

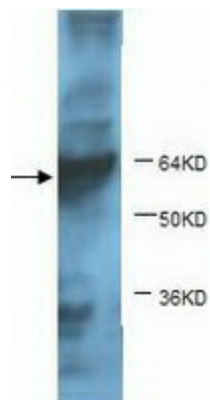
KLF15 Rabbit Polyclonal Antibody

Product data:

Product Type:	Primary Antibodies
Applications:	WB
Recommended Dilution:	WB: 1:1000
Reactivity:	Human
Host:	Rabbit
Isotype:	IgG
Clonality:	Polyclonal
Immunogen:	Synthetic peptide conjugated to KLH
Formulation:	PBS, pH 7.4 with 0.05% sodium azide.
Purification:	Purified
Conjugation:	Unconjugated
Storage:	Store at -20°C as received.
Stability:	Stable for 12 months from date of receipt.
Gene Name:	Kruppel-like factor 15
Database Link:	NP_054798 Entrez Gene 28999 Human Q9UIH9
Synonyms:	KKLF
Protein Families:	Transcription Factors



[View online »](#)

Product images:

Western blot analysis of fetal liver lysates with anti-KLF15 antibody (1:1000). This antibody, under reducing conditions, identified a band of ~65kDa.