

Product datasheet for **TA310149**

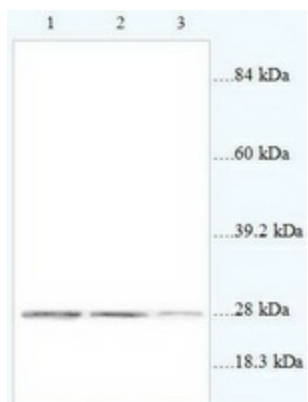
ERAB (HSD17B10) Rabbit Polyclonal Antibody

Product data:

Product Type:	Primary Antibodies
Applications:	WB
Recommended Dilution:	WB: 1:500~1:1000
Reactivity:	Human, Mouse
Host:	Rabbit
Isotype:	IgG
Clonality:	Polyclonal
Immunogen:	Synthetic peptide derived from Human HADH2.
Formulation:	PBS, pH 7.4 with 0.02% sodium azide.
Concentration:	lot specific
Purification:	Affinity purified
Conjugation:	Unconjugated
Storage:	Store at -20°C as received.
Stability:	Stable for 12 months from date of receipt.
Gene Name:	hydroxysteroid (17-beta) dehydrogenase 10
Database Link:	NP_004484 Entrez Gene 15108 Mouse Entrez Gene 3028 Human Q99714
Synonyms:	17b-HSD10; ABAD; CAMR; DUPXp11.22; ERAB; HADH2; HCD2; MHBD; MRPP2; MRX17; MRX31; MRXS10; SCHAD
Protein Families:	Druggable Genome
Protein Pathways:	Alzheimer's disease, Metabolic pathways, Valine, leucine and isoleucine degradation



[View online »](#)

Product images:

Western blot analysis of Jurkat cells (Lane 1: 50ug lysate), EC9706 cells (Lane 2: 57ug lysate) and SGC cells (Lane 3: 50ug lysate) with anti-HADH2 antibody diluted at 1:1000.