

## Product datasheet for **TA310147**

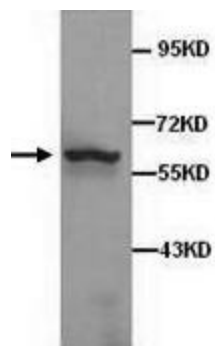
### DCP1A Rabbit Polyclonal Antibody

#### Product data:

Product Type:	Primary Antibodies
Applications:	WB
Recommended Dilution:	WB: 1:500~1:1000
Reactivity:	Human, Mouse
Host:	Rabbit
Isotype:	IgG
Clonality:	Polyclonal
Immunogen:	Synthetic peptide conjugated to KLH
Formulation:	Rabbit IgG in phosphate buffered saline (without Mg <sup>2+</sup> and Ca <sup>2+</sup> ), pH 7.4, 150mM NaCl, 0.02% sodium azide and 50% glycerol.
Concentration:	lot specific
Purification:	Affinity purified
Conjugation:	Unconjugated
Storage:	Store at -20°C as received.
Stability:	Stable for 12 months from date of receipt.
Gene Name:	decapping mRNA 1A
Database Link:	<a href="#">NP_060873</a> <a href="#">Entrez Gene 75901 Mouse</a> <a href="#">Entrez Gene 55802 Human</a> <a href="#">Q9NPI6</a>
Synonyms:	HSA275986; Nbla00360; SMAD4IP1; SMIF
Protein Families:	Transcription Factors
Protein Pathways:	RNA degradation



[View online »](#)

**Product images:**

Western blot analysis of HeLa cell lysates with anti-Dcp1a antibody (1:500).