

Product datasheet for **TA310145**

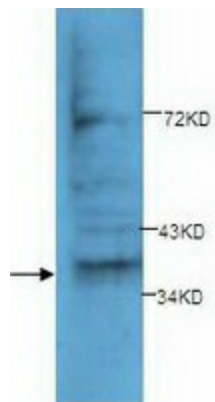
Annexin A10 (ANXA10) Rabbit Polyclonal Antibody

Product data:

Product Type:	Primary Antibodies
Applications:	WB
Recommended Dilution:	WB: 1:200
Reactivity:	Human, Mouse, Rat
Host:	Rabbit
Isotype:	IgG
Clonality:	Polyclonal
Immunogen:	Synthetic peptide conjugated to KLH
Formulation:	PBS, pH 7.4 with 0.05% sodium azide.
Concentration:	lot specific
Purification:	Protein A purified
Conjugation:	Unconjugated
Storage:	Store at -20°C as received.
Stability:	Stable for 12 months from date of receipt.
Gene Name:	annexin A10
Database Link:	NP_009124 Entrez Gene 26359 Mouse Entrez Gene 498622 Rat Entrez Gene 11199 Human Q9UJ72
Synonyms:	ANX14



[View online »](#)

Product images:

Western blot analysis of HeLa cell lysates with anti-Annexin A10 antibody (1:200). This antibody identified a band of ~37kDa in HeLa cell lysates.