

Product datasheet for **TA310144**

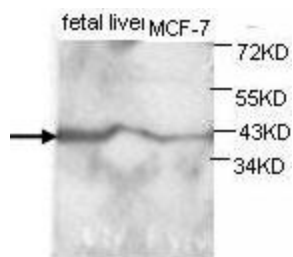
AKR1C3 Rabbit Polyclonal Antibody

Product data:

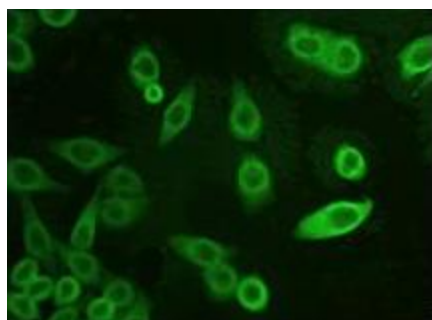
Product Type:	Primary Antibodies
Applications:	IF, WB
Recommended Dilution:	WB: 1:500, IF: 1:50
Reactivity:	Human
Host:	Rabbit
Isotype:	IgG
Clonality:	Polyclonal
Immunogen:	Synthetic peptide conjugated to KLH
Formulation:	PBS, pH 7.4 with 0.05% sodium azide.
Concentration:	lot specific
Purification:	Protein A purified
Conjugation:	Unconjugated
Storage:	Store at -20°C as received.
Stability:	Stable for 12 months from date of receipt.
Gene Name:	aldo-keto reductase family 1, member C3
Database Link:	NP_003730 Entrez Gene 8644 Human P42330
Synonyms:	DD3; DDX; HA1753; HAKRB; HAKRe; hluPGFS; HSD17B5; PGFS
Protein Families:	Druggable Genome
Protein Pathways:	Arachidonic acid metabolism, Metabolism of xenobiotics by cytochrome P450



[View online »](#)

Product images:

Western blot analysis of MCF-7 and fetal liver lysates with anti-AKR1C3 antibody (1:500). This antibody identified a band of ~37kDa in MCF-7 and fetal liver lysates.



Immunofluorescence staining of HeLa cells using anti-AKR1C3 antibody (1:50).