

Product datasheet for **TA310143**

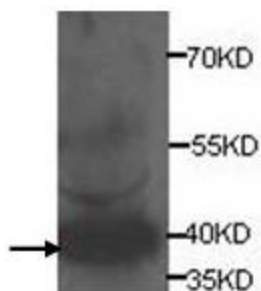
AKR1A1 Rabbit Polyclonal Antibody

Product data:

Product Type:	Primary Antibodies
Applications:	WB
Recommended Dilution:	WB: 1:500
Reactivity:	Human, Mouse, Rat
Host:	Rabbit
Isotype:	IgG
Clonality:	Polyclonal
Immunogen:	Synthetic peptide conjugated to KLH
Formulation:	PBS, pH 7.4 with 0.05% sodium azide.
Concentration:	lot specific
Purification:	Purified
Conjugation:	Unconjugated
Storage:	Store at -20°C as received.
Stability:	Stable for 12 months from date of receipt.
Gene Name:	aldo-keto reductase family 1, member A1 (aldehyde reductase)
Database Link:	NP_006057 Entrez Gene 58810 Mouse Entrez Gene 78959 Rat Entrez Gene 10327 Human P14550
Synonyms:	ALDR1; ALR; ARM; DD3; HEL-S-6
Protein Families:	Druggable Genome
Protein Pathways:	Glycerolipid metabolism, Glycolysis / Gluconeogenesis, Metabolic pathways



[View online »](#)

Product images:

Western blot analysis of human fetal liver lysates with anti-AKR1A1 antibody (1:500). This antibody identified a band of ~37kDa in human fetal liver lysates.