

## Product datasheet for **TA310138**

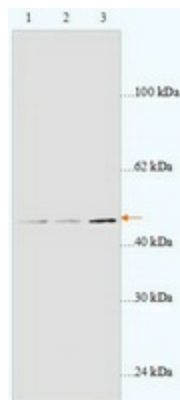
### Amino adipate aminotransferase (AADAT) Rabbit Polyclonal Antibody

#### Product data:

Product Type:	Primary Antibodies
Applications:	WB
Recommended Dilution:	WB: 1:500~1:1000
Reactivity:	Human
Host:	Rabbit
Isotype:	IgG
Clonality:	Polyclonal
Immunogen:	Synthetic peptide derived from Human AADAT.
Formulation:	PBS, pH 7.4 with 0.02% sodium azide.
Concentration:	lot specific
Purification:	Affinity purified
Conjugation:	Unconjugated
Storage:	Store at -20°C as received.
Stability:	Stable for 12 months from date of receipt.
Gene Name:	amino adipate aminotransferase
Database Link:	<a href="#">NP_057312</a> <a href="#">Entrez Gene 51166 Human</a> <a href="#">Q8N5Z0</a>
Synonyms:	KAT2; KATII; KYAT2
Protein Pathways:	Lysine biosynthesis, Lysine degradation, Metabolic pathways, Tryptophan metabolism



[View online »](#)

**Product images:**

Western blot analysis of THP1 cells (Lanes 1 and 2: 60ug lysate) and Jurkat cells (Lane 3: 80ug lysate) with anti-AADAT antibody diluted at 1:2000. (Predicted and observed size: 47kDa)