

Product datasheet for **TA310137**

Zyxin (ZYG) Rabbit Polyclonal Antibody

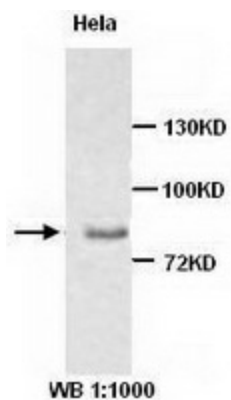
Product data:

Product Type:	Primary Antibodies
Applications:	IF, WB
Recommended Dilution:	WB: 1:500~1:1000, ELISA: 1:32,000, IF: 1:50
Reactivity:	Human
Host:	Rabbit
Isotype:	IgG
Clonality:	Polyclonal
Immunogen:	Synthetic peptide conjugated to KLH
Formulation:	PBS, pH 7.4 with 0.05% sodium azide.
Concentration:	lot specific
Purification:	Protein A purified
Conjugation:	Unconjugated
Storage:	Store at -20°C as received.
Stability:	Stable for 12 months from date of receipt.
Gene Name:	zyxin
Database Link:	NP_003452 Entrez Gene 7791 Human Q15942
Synonyms:	ESP-2; HED-2
Protein Pathways:	Focal adhesion

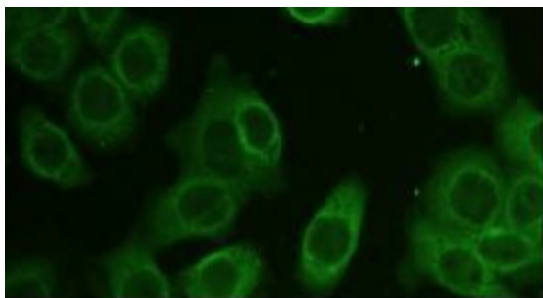


[View online »](#)

Product images:



Western blot analysis of HeLa cell lysates with anti-zyxin antibody diluted at 1:1000.



Immunofluorescence staining of HeLa cells using zyxin antibody diluted at 1:50.