

## Product datasheet for **TA310135**

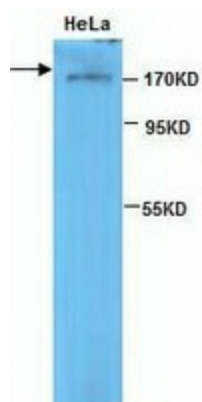
### Topoisomerase II beta (TOP2B) Rabbit Polyclonal Antibody

#### Product data:

Product Type:	Primary Antibodies
Applications:	WB
Recommended Dilution:	WB: 1:200
Reactivity:	Human
Host:	Rabbit
Isotype:	IgG
Clonality:	Polyclonal
Immunogen:	Synthetic peptide conjugated to KLH
Formulation:	PBS, pH 7.4 with 0.05% sodium azide.
Concentration:	lot specific
Purification:	Protein A purified
Conjugation:	Unconjugated
Storage:	Store at -20°C as received.
Stability:	Stable for 12 months from date of receipt.
Gene Name:	topoisomerase (DNA) II beta
Database Link:	<a href="#">NP_001059</a> <a href="#">Entrez Gene 7155 Human</a> <a href="#">Q02880</a>
Synonyms:	top2beta; TOPIIB
Protein Families:	Druggable Genome



[View online »](#)

**Product images:**

Western blot analysis of HeLa cell lysates with anti-TOP2B antibody (1:200). This antibody, under reducing conditions, identified a band of ~180kDa in HeLa cell lysates.